

Product datasheet for **TA340322**

SPPL3 Rabbit Polyclonal Antibody

Product data:

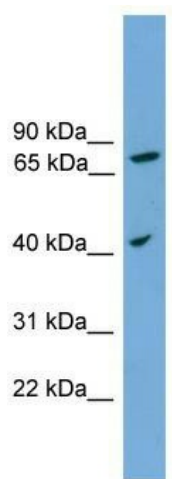
Product Type:	Primary Antibodies
Applications:	WB
Recommended Dilution:	WB
Reactivity:	Human
Host:	Rabbit
Isotype:	IgG
Clonality:	Polyclonal
Immunogen:	The immunogen for anti-SPPL3 antibody: synthetic peptide directed towards the middle region of human SPPL3. Synthetic peptide located within the following region: VMVKVATQPADNPLDVLSRKLHLGPNVGRDVPRLSLPGKLVFSPSTGSHF
Formulation:	Liquid. Purified antibody supplied in 1x PBS buffer with 0.09% (w/v) sodium azide and 2% sucrose. <i>Note that this product is shipped as lyophilized powder to China customers.</i>
Concentration:	lot specific
Purification:	Affinity Purified
Conjugation:	Unconjugated
Storage:	Store at -20°C as received.
Stability:	Stable for 12 months from date of receipt.
Predicted Protein Size:	42 kDa
Gene Name:	signal peptide peptidase like 3
Database Link:	NP_620584 Entrez Gene 121665 Human Q8TCT6
Background:	SPPL3 may act as intramembrane protease.
Synonyms:	IMP2; MDHV1887; PRO4332; PSH1; PSL4
Note:	Immunogen Sequence Homology: Dog: 100%; Pig: 100%; Rat: 100%; Horse: 100%; Human: 100%; Mouse: 100%; Bovine: 100%; Rabbit: 100%; Zebrafish: 100%; Guinea pig: 100%



[View online »](#)

Protein Families: Protease, Transmembrane

Product images:



WB Suggested Anti-SPPL3 Antibody Titration: 0.2-1 ug/ml; ELISA Titer: 1: 1562500; Positive Control: A549 cell lysate