

Product datasheet for **TA340321**

RDHE2 (SDR16C5) Rabbit Polyclonal Antibody

Product data:

Product Type:	Primary Antibodies
Applications:	WB
Recommended Dilution:	WB
Reactivity:	Human
Host:	Rabbit
Isotype:	IgG
Clonality:	Polyclonal
Immunogen:	The immunogen for anti-SDR16C5 antibody: synthetic peptide directed towards the middle region of human SDR16C5. Synthetic peptide located within the following region: AGLSGVNGLADYCAASKFAAFGFAESVVFVETVQKQKGIKTTIVCPFFIKT
Formulation:	Liquid. Purified antibody supplied in 1x PBS buffer with 0.09% (w/v) sodium azide and 2% sucrose. <i>Note that this product is shipped as lyophilized powder to China customers.</i>
Concentration:	lot specific
Purification:	Affinity Purified
Conjugation:	Unconjugated
Storage:	Store at -20°C as received.
Stability:	Stable for 12 months from date of receipt.
Predicted Protein Size:	34 kDa
Gene Name:	short chain dehydrogenase/reductase family 16C, member 5
Database Link:	NP_620419 Entrez Gene 195814 Human Q8N3Y7



[View online »](#)

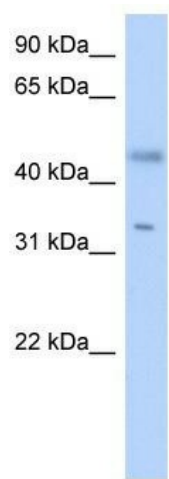
Background: The specific function of SDR16C5 is not yet known. SDR16C5 belongs to a family of short-chain alcohol dehydrogenases/reductases that catalyze the first and rate-limiting step that generates retinaldehyde from retinol (Matsuzaka et al., 2002 [PubMed 12372410]). [supplied by OMIM]. PRIMARYREFSEQ_SPAN PRIMARY_IDENTIFIER PRIMARY_SPAN COMP 1-454 AB083038.1 1-454 455-1307 AK095159.1 549-1401 1308-2860 BC037219.1 749-2301 2861-3039 BC037219.1 2303-2481

Synonyms: RDH#2; RDH-E2; RDHE2

Note: Immunogen Sequence Homology: Human: 100%; Rat: 93%; Pig: 92%; Guinea pig: 92%

Protein Families: Druggable Genome

Product images:



WB Suggested Anti-SDR16C5 Antibody Titration:
0.2-1 ug/ml; ELISA Titer: 1: 12500; Positive
Control: Transfected 293T