

Product datasheet for **TA340320**

DPPA2 Rabbit Polyclonal Antibody

Product data:

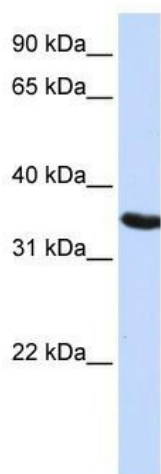
Product Type:	Primary Antibodies
Applications:	WB
Recommended Dilution:	WB
Reactivity:	Human
Host:	Rabbit
Isotype:	IgG
Clonality:	Polyclonal
Immunogen:	The immunogen for anti-DPPA2 antibody: synthetic peptide directed towards the N terminal of human DPPA2. Synthetic peptide located within the following region: NMEQMEPSVSSTSDVKLEKPKKYNPGHLLQTNEQFTAPQKARCKIPALPL
Formulation:	Liquid. Purified antibody supplied in 1x PBS buffer with 0.09% (w/v) sodium azide and 2% sucrose. <i>Note that this product is shipped as lyophilized powder to China customers.</i>
Concentration:	lot specific
Purification:	Affinity Purified
Conjugation:	Unconjugated
Storage:	Store at -20°C as received.
Stability:	Stable for 12 months from date of receipt.
Predicted Protein Size:	34 kDa
Gene Name:	developmental pluripotency associated 2
Database Link:	NP_620170 Entrez Gene 151871 Human Q7Z7J5
Background:	DPPA2 may play a role in maintaining cell pluripotentiality. ECSA/DPPA2 is a promising target for antigen-specific immunotherapy in non-small cell lung cancers.
Synonyms:	CT100; ECAT15-2; PESCRG1
Note:	Immunogen Sequence Homology: Human: 100%; Rat: 90%



[View online »](#)

Protein Families: Embryonic stem cells, Induced pluripotent stem cells, Stem cell - Pluripotency

Product images:



WB Suggested Anti-DPPA2 Antibody Titration: 0.2-1 ug/ml; ELISA Titer: 1: 62500; Positive Control: HepG2 cell lysate