

## Product datasheet for **TA340319**

### TRIM31 Rabbit Polyclonal Antibody

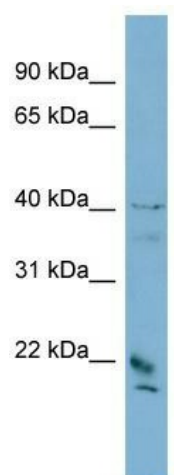
#### Product data:

Product Type:	Primary Antibodies
Applications:	WB
Recommended Dilution:	WB
Reactivity:	Human
Host:	Rabbit
Isotype:	IgG
Clonality:	Polyclonal
Immunogen:	The immunogen for anti-DYDC1 antibody: synthetic peptide directed towards the middle region of human DYDC1. Synthetic peptide located within the following region: EDILHSEEATLDSGKTLAEISDRYGAPNLSRVEELDEPMFSDIALNIDQD
Formulation:	Liquid. Purified antibody supplied in 1x PBS buffer with 0.09% (w/v) sodium azide and 2% sucrose. <i>Note that this product is shipped as lyophilized powder to China customers.</i>
Concentration:	lot specific
Purification:	Affinity Purified
Conjugation:	Unconjugated
Storage:	Store at -20°C as received.
Stability:	Stable for 12 months from date of receipt.
Predicted Protein Size:	21 kDa
Gene Name:	tripartite motif containing 31
Database Link:	<a href="#">NP_008959</a> <a href="#">Entrez Gene 11074 Human</a> <a href="#">Q9BZY9</a>
Background:	DYDC1 plays a crucial role during acrosome biogenesis.
Synonyms:	C6orf13; HCG1; HCGI; RNF
Note:	Immunogen Sequence Homology: Dog: 100%; Pig: 100%; Rat: 100%; Human: 100%; Mouse: 100%; Bovine: 100%; Rabbit: 100%; Guinea pig: 93%



[View online »](#)

## Product images:



WB Suggested Anti-DYDC1 Antibody Titration:  
0.2-1 ug/ml; ELISA Titer: 1: 312500; Positive  
Control: PANC1 cell lysate