

## Product datasheet for **TA340318**

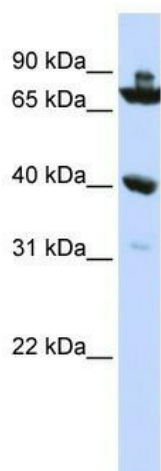
### C7orf31 Rabbit Polyclonal Antibody

#### Product data:

Product Type:	Primary Antibodies
Applications:	WB
Recommended Dilution:	WB
Reactivity:	Human
Host:	Rabbit
Isotype:	IgG
Clonality:	Polyclonal
Immunogen:	The immunogen for anti-C7orf31 antibody: synthetic peptide directed towards the N terminal of human C7orf31. Synthetic peptide located within the following region: EVIHGRPYCCRELEGADILSNTFYSNELHNPLQTVTRPTASEDRYQELRE
Formulation:	Liquid. Purified antibody supplied in 1x PBS buffer with 0.09% (w/v) sodium azide and 2% sucrose. <i>Note that this product is shipped as lyophilized powder to China customers.</i>
Concentration:	lot specific
Purification:	Affinity Purified
Conjugation:	Unconjugated
Storage:	Store at -20°C as received.
Stability:	Stable for 12 months from date of receipt.
Predicted Protein Size:	68 kDa
Gene Name:	chromosome 7 open reading frame 31
Database Link:	<a href="#">NP_620166</a> <a href="#">Entrez Gene 136895 Human</a> <a href="#">Q8N865</a>
Background:	The exact function of C7orf31 remains unknown.
Synonyms:	OTTHUMP00000202039
Note:	Immunogen Sequence Homology: Rat: 100%; Human: 100%; Mouse: 100%; Dog: 93%; Bovine: 93%; Pig: 86%; Horse: 86%; Guinea pig: 86%



[View online »](#)

**Product images:**

WB Suggested Anti-C7orf31 Antibody Titration:  
0.2-1 ug/ml; ELISA Titer: 1: 312500; Positive  
Control: HepG2 cell lysate