

Product datasheet for **TA340316**

C2orf65 (M1AP) Rabbit Polyclonal Antibody

Product data:

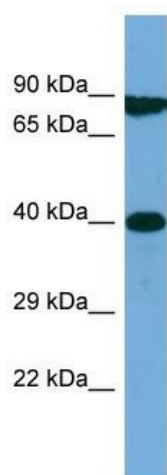
Product Type:	Primary Antibodies
Applications:	WB
Recommended Dilution:	WB
Reactivity:	Human
Host:	Rabbit
Isotype:	IgG
Clonality:	Polyclonal
Immunogen:	The immunogen for Anti-M1AP antibody is: synthetic peptide directed towards the middle region of HUMAN M1AP. Synthetic peptide located within the following region: EGLKDTDLARVRRFQVVEVTKGILEHVDSASPVEDTSNDESSILGTDIDL
Formulation:	Liquid. Purified antibody supplied in 1x PBS buffer with 0.09% (w/v) sodium azide and 2% sucrose. <i>Note that this product is shipped as lyophilized powder to China customers.</i>
Concentration:	lot specific
Purification:	Affinity Purified
Conjugation:	Unconjugated
Storage:	Store at -20°C as received.
Stability:	Stable for 12 months from date of receipt.
Predicted Protein Size:	40 kDa
Gene Name:	meiosis 1 associated protein
Database Link:	NP_001268224 Entrez Gene 130951 Human Q8TC57
Background:	This gene encodes a protein that is likely to function in progression of meiosis. A similar protein in mouse plays a role in gametogenesis in both sexes. Alternate splicing results in multiple transcript variants encoding different isoforms.
Synonyms:	C2orf65; D6Mm5e; SPATA37



[View online »](#)

Note: Immunogen Sequence Homology: Human: 100%; Horse: 86%; Pig: 79%

Product images:



Host: Rabbit
Target Name: M1AP
Sample Tissue: Jurkat Cell Lysate
Antibody Dilution: 1.0µg/ml

Host: Rabbit; Target Name: M1AP; Sample Tissue: Jurkat Whole Cell lysates; Antibody Dilution: 1.0 ug/ml