

## Product datasheet for **TA340314**

### Mutarotase (GALM) Rabbit Polyclonal Antibody

#### Product data:

Product Type:	Primary Antibodies
Applications:	WB
Recommended Dilution:	WB
Reactivity:	Human
Host:	Rabbit
Isotype:	IgG
Clonality:	Polyclonal
Immunogen:	The immunogen for anti-GALM antibody: synthetic peptide directed towards the N terminal of human GALM. Synthetic peptide located within the following region: WGCTITALEVKDRQGRASDVVLGF AELEGYLQKQPYFGAVIGRVANRIAK
Formulation:	Liquid. Purified antibody supplied in 1x PBS buffer with 0.09% (w/v) sodium azide and 2% sucrose. <i>Note that this product is shipped as lyophilized powder to China customers.</i>
Concentration:	lot specific
Purification:	Affinity Purified
Conjugation:	Unconjugated
Storage:	Store at -20°C as received.
Stability:	Stable for 12 months from date of receipt.
Predicted Protein Size:	38 kDa
Gene Name:	galactose mutarotase
Database Link:	<a href="#">NP_620156</a> <a href="#">Entrez Gene 130589 Human</a> <a href="#">Q96C23</a>
Background:	GALM is an enzyme that catalyzes the epimerization of hexose sugars such as glucose and galactose. It is expressed in the cytoplasm and has a preference for galactose. The protein may be required for normal galactose metabolism by maintaining the equilibrium of alpha and beta anomers of galactose.
Synonyms:	BLOCK25; GLAT; HEL-S-63p; IBD1

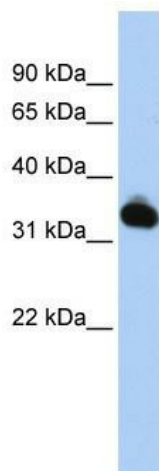


[View online »](#)

**Note:** Immunogen Sequence Homology: Dog: 100%; Pig: 100%; Rat: 100%; Human: 100%; Mouse: 100%; Rabbit: 100%; Guinea pig: 100%; Horse: 93%; Bovine: 93%

**Protein Pathways:** Glycolysis / Gluconeogenesis

**Product images:**



WB Suggested Anti-GALM Antibody Titration: 0.2-1 ug/ml; ELISA Titer: 1: 62500; Positive Control: HepG2 cell lysate