

Product datasheet for **TA340313**

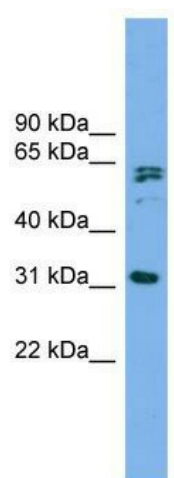
MITD1 Rabbit Polyclonal Antibody

Product data:

Product Type:	Primary Antibodies
Applications:	WB
Recommended Dilution:	WB
Reactivity:	Human
Host:	Rabbit
Isotype:	IgG
Clonality:	Polyclonal
Immunogen:	The immunogen for anti-MITD1 antibody: synthetic peptide directed towards the middle region of human MITD1. Synthetic peptide located within the following region: SHGVLLEVQYSSSIHDREIRFNNGWMIKIGRGLDYFKKPQSRFSLGYCDF
Formulation:	Liquid. Purified antibody supplied in 1x PBS buffer with 0.09% (w/v) sodium azide and 2% sucrose.
Concentration:	lot specific
Purification:	Affinity Purified
Conjugation:	Unconjugated
Storage:	Store at -20°C as received.
Stability:	Stable for 12 months from date of receipt.
Predicted Protein Size:	29
Gene Name:	microtubule interacting and trafficking domain containing 1
Database Link:	NP_620153 Entrez Gene 129531 Human Q8WV92
Background:	MITD1 may play a role in endosomal protein transport.
Synonyms:	domain containing 1; microtubule interacting and transport; MIT
Note:	Immunogen Sequence Homology: Dog: 100%; Human: 100%; Bovine: 100%; Pig: 93%; Rat: 93%; Mouse: 93%; Rabbit: 93%; Horse: 86%; Zebrafish: 86%; Guinea pig: 86%


[View online »](#)

Product images:



WB Suggested Anti-MITD1 Antibody Titration: 0.2-1 ug/ml; Positive Control: MCF7 cell lysate