

Product datasheet for **TA340310**

SPATA17 Rabbit Polyclonal Antibody

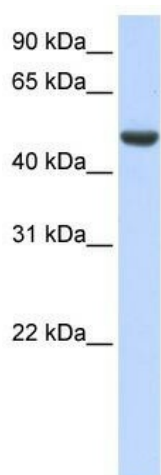
Product data:

Product Type:	Primary Antibodies
Applications:	WB
Recommended Dilution:	WB
Reactivity:	Human
Host:	Rabbit
Isotype:	IgG
Clonality:	Polyclonal
Immunogen:	The immunogen for anti-SPATA17 antibody: synthetic peptide directed towards the C terminal of human SPATA17. Synthetic peptide located within the following region: NMFLPFSSYHKNEKYIPSMHLSSKYGPISYKEQFRSENPKKWICKDKDFQT
Formulation:	Liquid. Purified antibody supplied in 1x PBS buffer with 0.09% (w/v) sodium azide and 2% sucrose. <i>Note that this product is shipped as lyophilized powder to China customers.</i>
Concentration:	lot specific
Purification:	Affinity Purified
Conjugation:	Unconjugated
Storage:	Store at -20°C as received.
Stability:	Stable for 12 months from date of receipt.
Predicted Protein Size:	43 kDa
Gene Name:	spermatogenesis associated 17
Database Link:	NP_620151 Entrez Gene 128153 Human Q96L03
Background:	SPATA17 contains 3 IQ domains. The function of the SPATA17 protein is not known.
Synonyms:	IQCH; MSRG-11; MSRG11
Note:	Immunogen Sequence Homology: Human: 100%; Rabbit: 91%



[View online »](#)

Product images:



WB Suggested Anti-SPATA17 Antibody Titration:
0.2-1 ug/ml; ELISA Titer: 1: 62500; Positive
Control: Human brain