

Product datasheet for **TA340307**

CANT1 Rabbit Polyclonal Antibody

Product data:

Product Type:	Primary Antibodies
Applications:	WB
Recommended Dilution:	WB
Reactivity:	Human
Host:	Rabbit
Isotype:	IgG
Clonality:	Polyclonal
Immunogen:	The immunogen for anti-CANT1 antibody: synthetic peptide directed towards the middle region of human CANT1. Synthetic peptide located within the following region: VAVEWDKDHGVLESHLAEKGRGMELSDLIVFNGKLYSVDDRTGVVYQIEG
Formulation:	Liquid. Purified antibody supplied in 1x PBS buffer with 0.09% (w/v) sodium azide and 2% sucrose. <i>Note that this product is shipped as lyophilized powder to China customers.</i>
Concentration:	lot specific
Purification:	Affinity Purified
Conjugation:	Unconjugated
Storage:	Store at -20°C as received.
Stability:	Stable for 12 months from date of receipt.
Predicted Protein Size:	45 kDa
Gene Name:	calcium activated nucleotidase 1
Database Link:	NP_620148 Entrez Gene 124583 Human Q8WWQ1
Background:	This protein encoded by this gene belongs to the apyrase family. It functions as a calcium-dependent nucleotidase with a preference for UDP. Mutations in this gene are associated with Desbuquois dysplasia with hand anomalies. Alternatively spliced transcr
Synonyms:	DBQD; DBQD1; SCAN-1; SCAN1; SHAPY



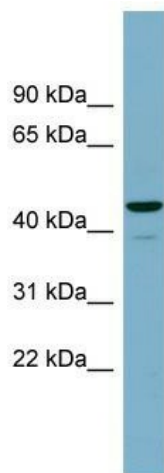
[View online »](#)

Note: Immunogen Sequence Homology: Human: 100%; Mouse: 100%; Dog: 93%; Pig: 93%; Rat: 93%; Guinea pig: 93%; Horse: 91%; Bovine: 79%; Rabbit: 79%

Protein Families: Secreted Protein

Protein Pathways: Purine metabolism, Pyrimidine metabolism

Product images:



WB Suggested Anti-CANT1 Antibody Titration:
0.2-1 ug/ml; Positive Control: Human Small
Intestine