

## Product datasheet for **TA340306**

### LEO1 Rabbit Polyclonal Antibody

#### Product data:

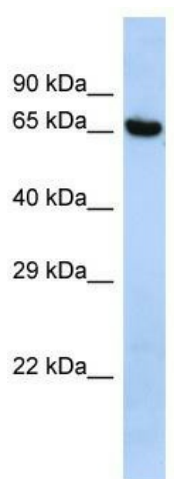
Product Type:	Primary Antibodies
Applications:	WB
Recommended Dilution:	WB
Reactivity:	Human
Host:	Rabbit
Isotype:	IgG
Clonality:	Polyclonal
Immunogen:	The immunogen for Anti-LEO1 antibody is: synthetic peptide directed towards the N-terminal region of Human LEO1. Synthetic peptide located within the following region: SGSDNHSERSDNRSEASERSDHEDNDPSDVDQHSSEAPNDDEDEGHRSD
Formulation:	Liquid. Purified antibody supplied in 1x PBS buffer with 0.09% (w/v) sodium azide and 2% sucrose. <i>Note that this product is shipped as lyophilized powder to China customers.</i>
Concentration:	lot specific
Purification:	Affinity Purified
Conjugation:	Unconjugated
Storage:	Store at -20°C as received.
Stability:	Stable for 12 months from date of receipt.
Predicted Protein Size:	66 kDa
Gene Name:	LEO1 homolog, Paf1/RNA polymerase II complex component
Database Link:	<a href="#">NP_001273359</a> <a href="#">Entrez Gene 123169 Human</a> <a href="#">Q8WVC0</a>
Background:	LEO1, parafibromin, CTR9, and PAF1 form the PAF protein complex that associates with the RNA polymerase II subunit POLR2A and with a histone methyltransferase complex.
Synonyms:	RDL



[View online »](#)

**Note:** Immunogen Sequence Homology: Dog: 100%; Pig: 100%; Horse: 100%; Human: 100%; Mouse: 100%; Rabbit: 100%; Rat: 93%; Bovine: 93%; Guinea pig: 86%

**Product images:**



Host: Rabbit; Target Name: LEO1; Sample Tissue: HepG2 Whole cell lysates; Antibody Dilution: 1.0 ug/ml