

Product datasheet for **TA340305**

C14orf148 (NOXRED1) Rabbit Polyclonal Antibody

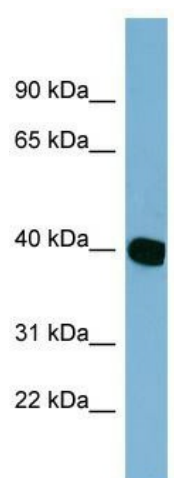
Product data:

Product Type:	Primary Antibodies
Applications:	WB
Recommended Dilution:	WB
Reactivity:	Human
Host:	Rabbit
Isotype:	IgG
Clonality:	Polyclonal
Immunogen:	The immunogen for anti-NOXRED1 antibody: synthetic peptide directed towards the middle region of human NOXRED1. Synthetic peptide located within the following region: KLLLNHTNLRPQYQYDEDSVSVWGANKGVIAALQDPTILQATCPYSPAG
Formulation:	Liquid. Purified antibody supplied in 1x PBS buffer with 0.09% (w/v) sodium azide and 2% sucrose.
Concentration:	lot specific
Purification:	Affinity Purified
Conjugation:	Unconjugated
Storage:	Store at -20°C as received.
Stability:	Stable for 12 months from date of receipt.
Predicted Protein Size:	39 kDa
Gene Name:	NADP-dependent oxidoreductase domain containing 1
Database Link:	NP_001106946 Entrez Gene 122945 Human Q6NXP6
Background:	The function of this protein remains unknown.
Synonyms:	C14orf148
Note:	Immunogen Sequence Homology: Dog: 100%; Human: 100%; Mouse: 85%; Bovine: 85%; Pig: 77%; Guinea pig: 77%



[View online »](#)

Product images:



WB Suggested Anti-NOXRED1 Antibody Titration:
0.2-1 ug/ml; Positive Control: HT1080 cell lysate