

## Product datasheet for **TA340303**

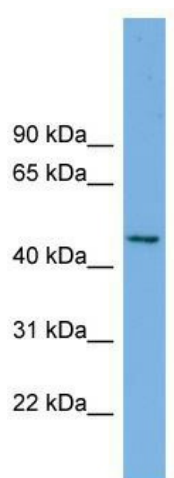
### **MIPOL 1 (MIPOL1) Rabbit Polyclonal Antibody**

#### **Product data:**

Product Type:	Primary Antibodies
Applications:	WB
Recommended Dilution:	WB
Reactivity:	Human
Host:	Rabbit
Isotype:	IgG
Clonality:	Polyclonal
Immunogen:	The immunogen for anti-MIPOL1 antibody: synthetic peptide directed towards the middle region of human MIPOL1. Synthetic peptide located within the following region: TKECKMRITAEEMSALIEERDAALSKCKRLEQELHHVKEQNQTSANNMRH
Formulation:	Liquid. Purified antibody supplied in 1x PBS buffer with 0.09% (w/v) sodium azide and 2% sucrose.
Concentration:	lot specific
Purification:	Affinity Purified
Conjugation:	Unconjugated
Storage:	Store at -20°C as received.
Stability:	Stable for 12 months from date of receipt.
Predicted Protein Size:	51 kDa
Gene Name:	mirror-image polydactyly 1
Database Link:	<a href="#">NP_620059</a> <a href="#">Entrez Gene 145282 Human</a> <a href="#">Q8TD10</a>
Background:	The function of this protein remains unknown.
Synonyms:	DKFZp313M2036; MGC34010
Note:	Immunogen Sequence Homology: Human: 100%; Dog: 93%; Pig: 93%; Rat: 93%; Horse: 93%; Guinea pig: 93%; Bovine: 86%; Rabbit: 86%; Mouse: 85%


[View online »](#)

## Product images:



WB Suggested Anti-MIPOL1 Antibody Titration:  
0.2-1 ug/ml; Positive Control: ACHN cell lysate