

## Product datasheet for **TA340302**

### MDP1 Rabbit Polyclonal Antibody

#### Product data:

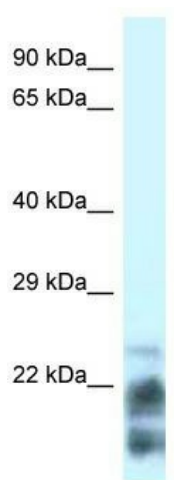
Product Type:	Primary Antibodies
Applications:	WB
Recommended Dilution:	WB
Reactivity:	Human
Host:	Rabbit
Isotype:	IgG
Clonality:	Polyclonal
Immunogen:	The immunogen for anti-MDP-1 antibody: synthetic peptide directed towards the N terminal of human MDP-1. Synthetic peptide located within the following region: MARLPKLA VFDLDYTLWPFWVDTHVDPPFHKSSDGTVRDRRGQDVRLYPE
Formulation:	Liquid. Purified antibody supplied in 1x PBS buffer with 0.09% (w/v) sodium azide and 2% sucrose. <i>Note that this product is shipped as lyophilized powder to China customers.</i>
Concentration:	lot specific
Purification:	Affinity Purified
Conjugation:	Unconjugated
Storage:	Store at -20°C as received.
Stability:	Stable for 12 months from date of receipt.
Predicted Protein Size:	20 kDa
Gene Name:	magnesium-dependent phosphatase 1
Database Link:	<a href="#">NP_612485</a> <a href="#">Entrez Gene 145553 Human</a> <a href="#">Q86V88</a>
Background:	MDP-1 is a magnesium-dependent phosphatase which may act as a tyrosine phosphatase.
Synonyms:	FN6PASE; MDP-1



[View online »](#)

**Note:** Immunogen Sequence Homology: Pig: 100%; Rat: 100%; Horse: 100%; Human: 100%; Mouse: 100%; Bovine: 100%; Rabbit: 100%; Guinea pig: 100%; Dog: 92%; Yeast: 92%; Zebrafish: 92%; Goat: 85%

**Product images:**



WB Suggested Anti-MDP-1 Antibody Titration: 0.2-1 ug/ml; Positive Control: HT1080 cell lysate