

Product datasheet for **TA340301**

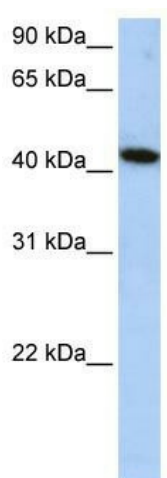
ALS2CR15 (ICA1L) Rabbit Polyclonal Antibody

Product data:

Product Type:	Primary Antibodies
Applications:	WB
Recommended Dilution:	WB
Reactivity:	Human
Host:	Rabbit
Isotype:	IgG
Clonality:	Polyclonal
Immunogen:	The immunogen for anti-ICA1L antibody: synthetic peptide directed towards the middle region of human ICA1L. Synthetic peptide located within the following region: PVPSQSPKCLRSPNNGNQDMSAWFNLFADLDPLSNPDAIGHSDDELLNA
Formulation:	Liquid. Purified antibody supplied in 1x PBS buffer with 0.09% (w/v) sodium azide and 2% sucrose. <i>Note that this product is shipped as lyophilized powder to China customers.</i>
Concentration:	lot specific
Purification:	Affinity Purified
Conjugation:	Unconjugated
Storage:	Store at -20°C as received.
Stability:	Stable for 12 months from date of receipt.
Predicted Protein Size:	54 kDa
Gene Name:	islet cell autoantigen 1 like
Database Link:	NP_612477 Entrez Gene 130026 Human Q8NDH6
Background:	ICA1L contains 1 AH domain. The function of the ICA1L protein remains.
Synonyms:	ALS2CR14; ALS2CR15
Note:	Immunogen Sequence Homology: Dog: 100%; Rat: 100%; Horse: 100%; Human: 100%; Mouse: 100%; Bovine: 100%; Rabbit: 100%; Zebrafish: 79%



[View online »](#)

Product images:

WB Suggested Anti-ICA1L Antibody Titration: 0.2-1 ug/ml; ELISA Titer: 1: 2500; Positive Control: HepG2 cell lysate