

## Product datasheet for **TA340300**

### TYW3 Rabbit Polyclonal Antibody

#### Product data:

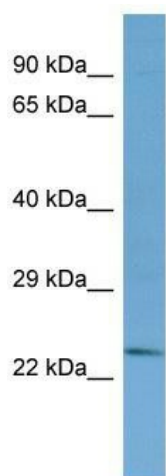
Product Type:	Primary Antibodies
Applications:	WB
Recommended Dilution:	WB
Reactivity:	Human
Host:	Rabbit
Isotype:	IgG
Clonality:	Polyclonal
Immunogen:	The immunogen for Anti-TYW3 antibody is: synthetic peptide directed towards the N-terminal region of Human TYW3. Synthetic peptide located within the following region: KAQCLSKADLSRKGSVDEVDVELVQFLNMRDQFFTTSSCAGRILLDRGI
Formulation:	Liquid. Purified antibody supplied in 1x PBS buffer with 0.09% (w/v) sodium azide and 2% sucrose. <i>Note that this product is shipped as lyophilized powder to China customers.</i>
Concentration:	lot specific
Purification:	Affinity Purified
Conjugation:	Unconjugated
Storage:	Store at -20°C as received.
Stability:	Stable for 12 months from date of receipt.
Predicted Protein Size:	24 kDa
Gene Name:	tRNA-yW synthesizing protein 3 homolog
Database Link:	<a href="#">NP_001156388</a> <a href="#">Entrez Gene 127253 Human</a> <a href="#">Q6IPR3</a>
Background:	Wybutosine (yW) is a hypermodified guanosine at the 3-prime position adjacent to the anticodon of phenylalanine tRNA that stabilizes codon-anticodon interactions during decoding on the ribosome. TYW3 is the human homolog of a yeast gene essential for yW synthesis .
Synonyms:	C1orf171



[View online »](#)

**Note:** Immunogen Sequence Homology: Pig: 100%; Rat: 100%; Horse: 100%; Human: 100%; Mouse: 100%; Bovine: 100%; Guinea pig: 100%; Rabbit: 93%

**Product images:**



Host: Rabbit; Target Name: TYW3; Sample Tissue: 721\_B Whole cell lysates; Antibody Dilution: 1.0 ug/ml