

## Product datasheet for **TA340299**

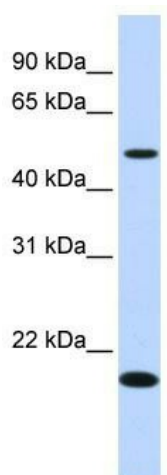
### C5orf55 (EXOC3-AS1) Rabbit Polyclonal Antibody

#### Product data:

Product Type:	Primary Antibodies
Applications:	WB
Recommended Dilution:	WB
Reactivity:	Human
Host:	Rabbit
Isotype:	IgG
Clonality:	Polyclonal
Immunogen:	The immunogen for anti-C5orf55 antibody: synthetic peptide directed towards the N terminal of human LOC116349. Synthetic peptide located within the following region: PAVFMLASSSALQCGRGVPRFPRTEVGAGHSVNEETKAEKVGNTSVIPA
Formulation:	Liquid. Purified antibody supplied in 1x PBS buffer with 0.09% (w/v) sodium azide and 2% sucrose.
Concentration:	lot specific
Purification:	Affinity Purified
Conjugation:	Unconjugated
Storage:	Store at -20°C as received.
Stability:	Stable for 12 months from date of receipt.
Predicted Protein Size:	13 kDa
Gene Name:	EXOC3 antisense RNA 1
Database Link:	<a href="#">NP_612473</a> <a href="#">Entrez Gene 116349 Human</a>
Background:	The function of LOC116349 remains unknown.
Note:	Immunogen Sequence Homology: Human: 100%


[View online »](#)

## Product images:



WB Suggested Anti-C5orf55 Antibody Titration:  
0.2-1 ug/ml; ELISA Titer: 1: 62500; Positive  
Control: Human Liver