

Product datasheet for **TA340297**

DHRS1 Rabbit Polyclonal Antibody

Product data:

Product Type:	Primary Antibodies
Applications:	WB
Recommended Dilution:	WB
Reactivity:	Human
Host:	Rabbit
Isotype:	IgG
Clonality:	Polyclonal
Immunogen:	The immunogen for anti-DHRS1 antibody: synthetic peptide directed towards the N terminal of human DHRS1. Synthetic peptide located within the following region: ITGRHLDTLRVVAQEASLGGQCVPVCDSSQESEVRSLEFQVDREQQGR
Formulation:	Liquid. Purified antibody supplied in 1x PBS buffer with 0.09% (w/v) sodium azide and 2% sucrose.
Concentration:	lot specific
Purification:	Affinity Purified
Conjugation:	Unconjugated
Storage:	Store at -20°C as received.
Stability:	Stable for 12 months from date of receipt.
Predicted Protein Size:	34 kDa
Gene Name:	dehydrogenase/reductase 1
Database Link:	NP_612461 Entrez Gene 115817 Human Q96LJ7
Background:	DHRS1 is a member of the short-chain dehydrogenases/reductases (SDR) family. The enzyme contains a conserved catalytic domain and likely functions as an oxidoreductase. Multiple alternatively spliced variants, encoding the same protein, have been identified.
Synonyms:	SDR19C1

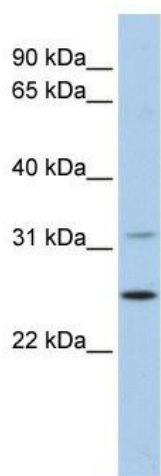


[View online »](#)

Note: Immunogen Sequence Homology: Human: 100%; Rabbit: 100%; Pig: 92%; Rat: 92%; Mouse: 92%; Bovine: 92%; Guinea pig: 92%; Horse: 85%

Protein Families: Druggable Genome

Product images:



WB Suggested Anti-DHRS1 Antibody Titration:
0.2-1 ug/ml; ELISA Titer: 1: 62500; Positive
Control: 721_B cell lysate DHRS1 is supported by
BioGPS gene expression data to be expressed in
721_B