

## Product datasheet for **TA340295**

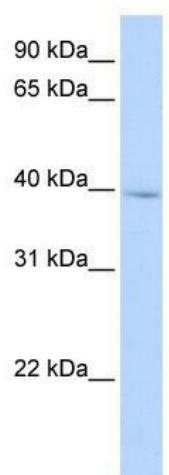
### IQCD Rabbit Polyclonal Antibody

#### Product data:

Product Type:	Primary Antibodies
Applications:	WB
Recommended Dilution:	WB
Reactivity:	Human
Host:	Rabbit
Isotype:	IgG
Clonality:	Polyclonal
Immunogen:	The immunogen for anti-IQCD antibody: synthetic peptide directed towards the N terminal of human IQCD. Synthetic peptide located within the following region: ALDILAMAPLYQAPAINRIGPKTDPSKRPADPLKPLVLSRTKLTTIEAKR
Formulation:	Liquid. Purified antibody supplied in 1x PBS buffer with 0.09% (w/v) sodium azide and 2% sucrose. <i>Note that this product is shipped as lyophilized powder to China customers.</i>
Concentration:	lot specific
Purification:	Affinity Purified
Conjugation:	Unconjugated
Storage:	Store at -20°C as received.
Stability:	Stable for 12 months from date of receipt.
Predicted Protein Size:	40 kDa
Gene Name:	IQ motif containing D
Database Link:	<a href="#">NP_612460</a> <a href="#">Entrez Gene 115811 Human</a> <a href="#">Q96DY2</a>
Background:	IQCD contains 1 IQ domain. The function of the IQCD protein is not known.
Synonyms:	4933433C09Rik; CFAP84; DRC10
Note:	Immunogen Sequence Homology: Human: 100%



[View online »](#)

**Product images:**


WB Suggested Anti-IQCD Antibody Titration: 0.2-1 ug/ml; ELISA Titer: 1: 62500; Positive Control: Human heart