

## Product datasheet for **TA340293**

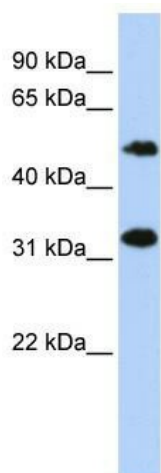
### **C6orf150 (MB21D1) Rabbit Polyclonal Antibody**

#### **Product data:**

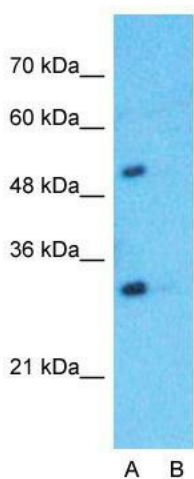
<b>Product Type:</b>	Primary Antibodies
<b>Applications:</b>	WB
<b>Recommended Dilution:</b>	WB
<b>Reactivity:</b>	Human
<b>Host:</b>	Rabbit
<b>Isotype:</b>	IgG
<b>Clonality:</b>	Polyclonal
<b>Immunogen:</b>	The immunogen for anti-MB21D1 antibody: synthetic peptide directed towards the middle region of human MB21D1. Synthetic peptide located within the following region: VPKHAKEGNGFQEETWRLSFSHIEKEILNNHGKSKTCCENKEEKCCRKDC
<b>Formulation:</b>	Liquid. Purified antibody supplied in 1x PBS buffer with 0.09% (w/v) sodium azide and 2% sucrose. <i>Note that this product is shipped as lyophilized powder to China customers.</i>
<b>Concentration:</b>	lot specific
<b>Purification:</b>	Affinity Purified
<b>Conjugation:</b>	Unconjugated
<b>Storage:</b>	Store at -20°C as received.
<b>Stability:</b>	Stable for 12 months from date of receipt.
<b>Predicted Protein Size:</b>	59 kDa
<b>Gene Name:</b>	Mab-21 domain containing 1
<b>Database Link:</b>	<a href="#">NP_612450</a> <a href="#">Entrez Gene 115004 Human</a> <a href="#">Q8N884</a>
<b>Background:</b>	The exact function of MB21D1 remains unknown.
<b>Synonyms:</b>	C6orf150; cGAS; h-cGAS
<b>Note:</b>	Immunogen Sequence Homology: Horse: 100%; Human: 100%; Rabbit: 100%; Pig: 93%; Bovine: 86%; Guinea pig: 79%



[View online »](#)

**Product images:**


WB Suggested Anti-MB21D1 Antibody Titration:  
0.2-1 ug/ml; ELISA Titer: 1: 312500; Positive  
Control: Jurkat cell lysate


**Anti-C6orf150 Western Blot & Peptide Block Validation**

Lysate: HepG2 Cell

Lane A: Primary Antibody  
Lane B: Primary Antibody + Blocking Peptide

Primary Antibody Concentration: 1.0µg/ml  
Peptide Concentration: 5.0µg/ml  
Lysate Quantity: 25µg/lane  
Gel Concentration: 12%

Host: Rabbit; Target Name: C6orf150; Sample  
Tissue: HepG2; Lane A: Primary Antibody; Lane B:  
Primary Antibody + Blocking Peptide; Primary  
Antibody Concentration: 1 ug/ml; Peptide  
Concentration: 5 ug/ml; Lysate Quantity: 25  
ug/lane/lane; Gel Concentration: