

Product datasheet for **TA340291**

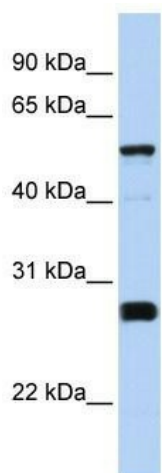
FAM83F Rabbit Polyclonal Antibody

Product data:

Product Type:	Primary Antibodies
Applications:	WB
Recommended Dilution:	WB
Reactivity:	Human
Host:	Rabbit
Isotype:	IgG
Clonality:	Polyclonal
Immunogen:	The immunogen for anti-FAM83F antibody: synthetic peptide directed towards the middle region of human FAM83F. Synthetic peptide located within the following region: FRELYAISEEVDLYRQLSLAGRVGLHYSSTVARKLINPKYALVSGCRHPP
Formulation:	Liquid. Purified antibody supplied in 1x PBS buffer with 0.09% (w/v) sodium azide and 2% sucrose.
Concentration:	lot specific
Purification:	Affinity Purified
Conjugation:	Unconjugated
Storage:	Store at -20°C as received.
Stability:	Stable for 12 months from date of receipt.
Predicted Protein Size:	55 kDa
Gene Name:	family with sequence similarity 83 member F
Database Link:	NP_612444 Entrez Gene 113828 Human Q8NEG4
Background:	The exact function of FAM83F remains unknown.
Synonyms:	FAM83F
Note:	Immunogen Sequence Homology: Dog: 100%; Pig: 100%; Rat: 100%; Horse: 100%; Human: 100%; Mouse: 100%; Bovine: 100%; Rabbit: 100%; Guinea pig: 100%; Zebrafish: 90%


[View online »](#)

Product images:



WB Suggested Anti-FAM83F Antibody Titration:
0.2-1 ug/ml; ELISA Titer: 1: 62500; Positive
Control: Human brain