

Product datasheet for **TA340290**

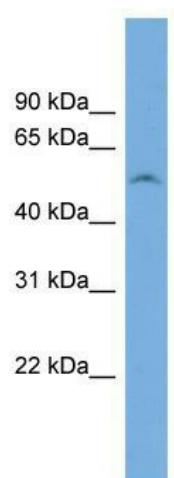
FAM83F Rabbit Polyclonal Antibody

Product data:

| | |
|-------------------------|--|
| Product Type: | Primary Antibodies |
| Applications: | WB |
| Recommended Dilution: | WB |
| Reactivity: | Human |
| Host: | Rabbit |
| Isotype: | IgG |
| Clonality: | Polyclonal |
| Immunogen: | The immunogen for anti-FAM83F antibody: synthetic peptide directed towards the N terminal of human FAM83F. Synthetic peptide located within the following region: KDEKAPHLKQVVRQMIQQAQKVIAVMDLFTDGDIFQDIVDAACKRRVPV |
| Formulation: | Liquid. Purified antibody supplied in 1x PBS buffer with 0.09% (w/v) sodium azide and 2% sucrose. |
| Concentration: | lot specific |
| Purification: | Affinity Purified |
| Conjugation: | Unconjugated |
| Storage: | Store at -20°C as received. |
| Stability: | Stable for 12 months from date of receipt. |
| Predicted Protein Size: | 55 |
| Gene Name: | family with sequence similarity 83 member F |
| Database Link: | NP_612444 Entrez Gene 113828 Human Q8NEG4 |
| Background: | The exact function of FAM83F remains unknown. |
| Synonyms: | FAM83F |
| Note: | Immunogen Sequence Homology: Dog: 100%; Pig: 100%; Rat: 100%; Horse: 100%; Human: 100%; Mouse: 100%; Guinea pig: 100%; Bovine: 93%; Rabbit: 86% |


[View online »](#)

Product images:



WB Suggested Anti-FAM83F Antibody Titration:
0.2-1 ug/ml; Positive Control: Human Placenta