

Product datasheet for **TA340289**

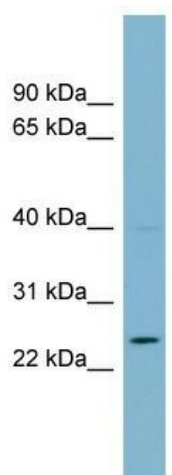
C7ORF29 (ZBED6CL) Rabbit Polyclonal Antibody

Product data:

Product Type:	Primary Antibodies
Applications:	WB
Recommended Dilution:	WB
Reactivity:	Human
Host:	Rabbit
Isotype:	IgG
Clonality:	Polyclonal
Immunogen:	The immunogen for anti-ZBED6CL antibody: synthetic peptide directed towards the middle region of human ZBED6CL. Synthetic peptide located within the following region: VKEIRVSEYSLNSPSPQLQSPRGLCVDPTRVAKSSGVEGRSQGEPLQSSSH
Formulation:	Liquid. Purified antibody supplied in 1x PBS buffer with 0.09% (w/v) sodium azide and 2% sucrose.
Concentration:	lot specific
Purification:	Affinity Purified
Conjugation:	Unconjugated
Storage:	Store at -20°C as received.
Stability:	Stable for 12 months from date of receipt.
Predicted Protein Size:	26 kDa
Gene Name:	ZBED6 C-terminal like
Database Link:	NP_612443 Entrez Gene 113763 Human Q96FA7
Background:	The function of this protein remains unknown.
Synonyms:	C7orf29
Note:	Immunogen Sequence Homology: Human: 100%



[View online »](#)

Product images:

WB Suggested Anti-ZBED6CL Antibody Titration:
0.2-1 ug/ml; Positive Control: COLO205 cell lysate