

## Product datasheet for **TA340287**

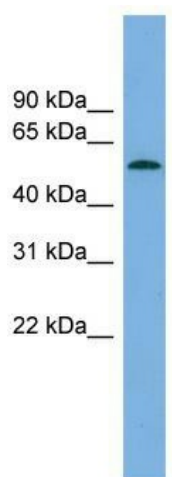
### GLCCI1 Rabbit Polyclonal Antibody

#### Product data:

Product Type:	Primary Antibodies
Applications:	WB
Recommended Dilution:	WB
Reactivity:	Human
Host:	Rabbit
Isotype:	IgG
Clonality:	Polyclonal
Immunogen:	The immunogen for anti-GLCCI1 antibody: synthetic peptide directed towards the middle region of human GLCCI1. Synthetic peptide located within the following region: PYLTGQWPRDPHVHYPSMKDKATQTPSCWAEEGA EKRS HQRSASWGSAD
Formulation:	Liquid. Purified antibody supplied in 1x PBS buffer with 0.09% (w/v) sodium azide and 2% sucrose. <i>Note that this product is shipped as lyophilized powder to China customers.</i>
Concentration:	lot specific
Purification:	Affinity Purified
Conjugation:	Unconjugated
Storage:	Store at -20°C as received.
Stability:	Stable for 12 months from date of receipt.
Predicted Protein Size:	58
Gene Name:	glucocorticoid induced 1
Database Link:	<a href="#">NP_612435</a> <a href="#">Entrez Gene 113263 Human</a> <a href="#">Q86VQ1</a>
Background:	The function of this protein remains unknown.
Synonyms:	FAM117C; GCTR; GIG18; TSSN1
Note:	Immunogen Sequence Homology: Dog: 100%; Pig: 100%; Rat: 100%; Horse: 100%; Human: 100%; Mouse: 100%; Bovine: 100%; Rabbit: 93%; Guinea pig: 93%



[View online »](#)

**Product images:**

WB Suggested Anti-GLCCI1 Antibody Titration:  
0.2-1 ug/ml; Positive Control: Human brain