

Product datasheet for **TA340285**

SAAL1 Rabbit Polyclonal Antibody

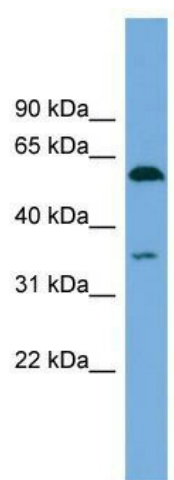
Product data:

Product Type:	Primary Antibodies
Applications:	WB
Recommended Dilution:	WB
Reactivity:	Human
Host:	Rabbit
Isotype:	IgG
Clonality:	Polyclonal
Immunogen:	The immunogen for anti-SAAL1 antibody: synthetic peptide directed towards the N terminal of human SAAL1. Synthetic peptide located within the following region: MDRNPSPPPPGRDKEEEVAGGDCIGSTVYSKHWLFGVLSGLIQIVSPE
Formulation:	Liquid. Purified antibody supplied in 1x PBS buffer with 0.09% (w/v) sodium azide and 2% sucrose.
Concentration:	lot specific
Purification:	Affinity Purified
Conjugation:	Unconjugated
Storage:	Store at -20°C as received.
Stability:	Stable for 12 months from date of receipt.
Predicted Protein Size:	53
Gene Name:	serum amyloid A like 1
Database Link:	NP_612430 Entrez Gene 113174 Human Q96ER3
Background:	The function of this protein remains unknown.
Synonyms:	SPACIA1
Note:	Immunogen Sequence Homology: Human: 100%; Mouse: 100%; Rabbit: 100%; Dog: 92%; Bovine: 92%



[View online »](#)

Product images:



WB Suggested Anti-SAAL1 Antibody Titration: 0.2-1 ug/ml; Positive Control: MCF7 cell lysate