

Product datasheet for **TA340283**

RUNDC3B Rabbit Polyclonal Antibody

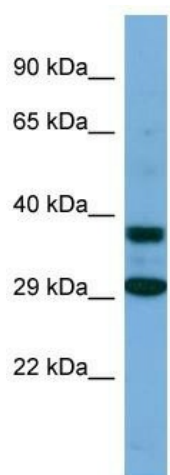
Product data:

Product Type:	Primary Antibodies
Applications:	WB
Recommended Dilution:	WB
Reactivity:	Human
Host:	Rabbit
Isotype:	IgG
Clonality:	Polyclonal
Immunogen:	The immunogen for Anti-RUNDC3B antibody is: synthetic peptide directed towards the C-terminal region of HUMAN RUNDC3B. Synthetic peptide located within the following region: LEQKGYLEELLRLRENQLSESVSQNKILLQRIEDSDLAHKLEKEQLEYII
Formulation:	Liquid. Purified antibody supplied in 1x PBS buffer with 0.09% (w/v) sodium azide and 2% sucrose.
Concentration:	lot specific
Purification:	Affinity Purified
Conjugation:	Unconjugated
Storage:	Store at -20°C as received.
Stability:	Stable for 12 months from date of receipt.
Predicted Protein Size:	36 kDa
Gene Name:	RUN domain containing 3B
Database Link:	NP_001127877 Entrez Gene 154661 Human Q96NLO
Background:	The function of this protein remains unknown.
Synonyms:	RPIB9; RPIP9
Note:	Immunogen Sequence Homology: Dog: 100%; Pig: 100%; Rat: 100%; Horse: 100%; Human: 100%; Mouse: 100%; Rabbit: 100%; Guinea pig: 100%; Zebrafish: 93%; Bovine: 92%



[View online »](#)

Product images:



Host: Rabbit
Target Name: RUNDC3B
Sample Tissue: 293T Cell Lysate
Antibody Dilution: 1.0 μ g/ml

Host: Rabbit; Target Name: RUNDC3B; Sample Tissue: 293T Whole Cell lysates; Antibody Dilution: 1.0 ug/ml; RUNDC3B is supported by BioGPS gene expression data to be expressed in HEK293T