

Product datasheet for **TA340282**

ACTRT1 Rabbit Polyclonal Antibody

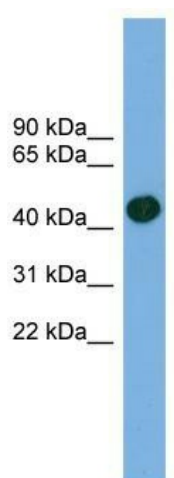
Product data:

Product Type:	Primary Antibodies
Applications:	WB
Recommended Dilution:	WB
Reactivity:	Human
Host:	Rabbit
Isotype:	IgG
Clonality:	Polyclonal
Immunogen:	The immunogen for anti-ACTRT1 antibody: synthetic peptide directed towards the middle region of human ACTRT1. Synthetic peptide located within the following region: DTDIQNKLYADIVLSGGTLLPGLEERLMKEVEQLASKGTPIKITASPDR
Formulation:	Liquid. Purified antibody supplied in 1x PBS buffer with 0.09% (w/v) sodium azide and 2% sucrose. <i>Note that this product is shipped as lyophilized powder to China customers.</i>
Concentration:	lot specific
Purification:	Affinity Purified
Conjugation:	Unconjugated
Storage:	Store at -20°C as received.
Stability:	Stable for 12 months from date of receipt.
Predicted Protein Size:	42
Gene Name:	actin related protein T1
Database Link:	NP_612146 Entrez Gene 139741 Human Q8TDG2
Background:	The specific function of ACTRT1 is not yet known.
Synonyms:	AIP1; ARIP1; ARPT1; HSD27
Note:	Immunogen Sequence Homology: Dog: 100%; Human: 100%; Bovine: 100%; Pig: 93%; Rat: 93%; Horse: 93%; Mouse: 93%; Rabbit: 93%; Guinea pig: 93%



[View online »](#)

Product images:



WB Suggested Anti-ACTRT1 Antibody Titration:
0.2-1 ug/ml; ELISA Titer: 1: 1562500; Positive
Control: 721_B cell lysate