

## Product datasheet for **TA340281**

### ACTRT1 Rabbit Polyclonal Antibody

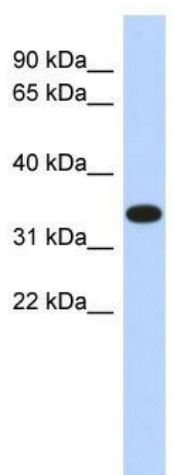
#### Product data:

Product Type:	Primary Antibodies
Applications:	WB
Recommended Dilution:	WB
Reactivity:	Human
Host:	Rabbit
Isotype:	IgG
Clonality:	Polyclonal
Immunogen:	The immunogen for anti-ACTRT1 antibody: synthetic peptide directed towards the middle region of human ACTRT1. Synthetic peptide located within the following region: DTDIQNKLYADIVLSGGTLLPGLEERLMKEVEQLASKGTPIKITASPDR
Formulation:	Liquid. Purified antibody supplied in 1x PBS buffer with 0.09% (w/v) sodium azide and 2% sucrose. <i>Note that this product is shipped as lyophilized powder to China customers.</i>
Concentration:	lot specific
Purification:	Affinity Purified
Conjugation:	Unconjugated
Storage:	Store at -20°C as received.
Stability:	Stable for 12 months from date of receipt.
Predicted Protein Size:	42 kDa
Gene Name:	actin related protein T1
Database Link:	<a href="#">NP_612146</a> <a href="#">Entrez Gene 139741 Human Q8TDG2</a>
Background:	The specific function of ACTRT1 is not yet known.
Synonyms:	AIP1; ARIP1; ARPT1; HSD27
Note:	Immunogen Sequence Homology: Human: 100%; Dog: 93%; Bovine: 92%; Pig: 86%; Rat: 86%; Mouse: 86%; Horse: 85%; Rabbit: 85%; Guinea pig: 85%



[View online »](#)

## Product images:



WB Suggested Anti-ACTRT1 Antibody Titration:  
0.2-1 ug/ml; ELISA Titer: 1: 312500; Positive  
Control: Human Pancreas