

## Product datasheet for **TA340280**

### Nup53 (NUP35) Rabbit Polyclonal Antibody

#### Product data:

Product Type:	Primary Antibodies
Applications:	WB
Recommended Dilution:	WB
Reactivity:	Human
Host:	Rabbit
Isotype:	IgG
Clonality:	Polyclonal
Immunogen:	The immunogen for anti-NUP35 antibody: synthetic peptide directed towards the C terminal of human NUP35. Synthetic peptide located within the following region: STPRISTMRPLATAYKASTSDYQVISDRQTPKKDESLVSKAMEYMF <del>GW</del>
Formulation:	Liquid. Purified antibody supplied in 1x PBS buffer with 0.09% (w/v) sodium azide and 2% sucrose. <i>Note that this product is shipped as lyophilized powder to China customers.</i>
Concentration:	lot specific
Purification:	Affinity Purified
Conjugation:	Unconjugated
Storage:	Store at -20°C as received.
Stability:	Stable for 12 months from date of receipt.
Predicted Protein Size:	35 kDa
Gene Name:	nucleoporin 35kDa
Database Link:	<a href="#">NP_612142</a> <a href="#">Entrez Gene 129401 Human</a> <a href="#">Q8NFH5</a>



[View online »](#)

**Background:**

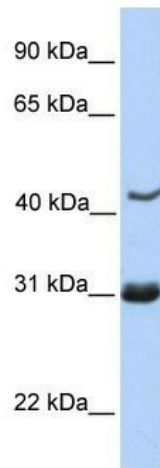
NUP35 is a member of the nucleoporin family. The protein is localized to the nuclear rim and is part of the nuclear pore complex (NPC). All molecules entering or leaving the nucleus either diffuse through or are actively transported by the NPC. This gene encodes a member of the nucleoporin family. The protein is localized to the nuclear rim and is part of the nuclear pore complex (NPC). All molecules entering or leaving the nucleus either diffuse through or are actively transported by the NPC.

**Synonyms:**

MP-44; MP44; NP44; NUP53

**Note:**

Immunogen Sequence Homology: Dog: 100%; Pig: 100%; Rat: 100%; Horse: 100%; Human: 100%; Mouse: 100%; Bovine: 100%; Rabbit: 100%; Guinea pig: 100%; Zebrafish: 86%

**Product images:**

WB Suggested Anti-NUP35 Antibody Titration:  
0.2-1 ug/ml; Positive Control: Jurkat cell lysate