

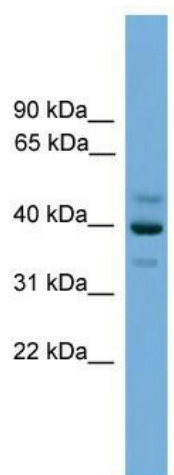
Product datasheet for **TA340278**

BNIPL Rabbit Polyclonal Antibody

Product data:

Product Type:	Primary Antibodies
Applications:	WB
Recommended Dilution:	WB
Reactivity:	Human
Host:	Rabbit
Isotype:	IgG
Clonality:	Polyclonal
Immunogen:	The immunogen for anti-BNIPL antibody: synthetic peptide directed towards the middle region of human BNIPL. Synthetic peptide located within the following region: AENYLLVHLSGGTSRAQVPPLSWIRQCYRTLDRRLRKNLRALVVVHATWY
Formulation:	Liquid. Purified antibody supplied in 1x PBS buffer with 0.09% (w/v) sodium azide and 2% sucrose.
Concentration:	lot specific
Purification:	Affinity Purified
Conjugation:	Unconjugated
Storage:	Store at -20°C as received.
Stability:	Stable for 12 months from date of receipt.
Predicted Protein Size:	40 kDa
Gene Name:	BCL2/adenovirus E1B 19kD interacting protein like
Database Link:	NP_612122 Entrez Gene 149428 Human Q7Z465
Background:	BNIPL may be a bridge molecule between BCL2 and ARHGAP1/CDC42 in promoting cell death.
Synonyms:	BNIP-S; BNIP-Salpha; BNIP-Sbeta; BNIPL-1; BNIPL-2; BNIPL1; BNIPL2; BNIPS; PP753
Note:	Immunogen Sequence Homology: Dog: 100%; Pig: 100%; Rat: 100%; Horse: 100%; Human: 100%; Mouse: 100%; Bovine: 100%; Rabbit: 100%; Guinea pig: 100%


[View online »](#)

Product images:


WB Suggested Anti-BNIP1 Antibody Titration: 0.2-1 ug/ml; Positive Control: OVCAR-3 cell lysate