

## Product datasheet for **TA340277**

### Phostensin (PPP1R18) Rabbit Polyclonal Antibody

#### Product data:

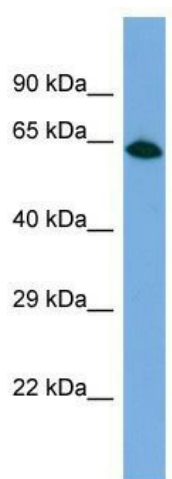
Product Type:	Primary Antibodies
Applications:	WB
Recommended Dilution:	WB
Reactivity:	Human
Host:	Rabbit
Isotype:	IgG
Clonality:	Polyclonal
Immunogen:	The immunogen for Anti-PPP1R18 antibody is: synthetic peptide directed towards the C-terminal region of Human PPP1R18. Synthetic peptide located within the following region: PEDAGTGGLRQQEEEEAVELQPPPPAPLSPPPPAPTAPQPPGDPLMSRLFY
Formulation:	Liquid. Purified antibody supplied in 1x PBS buffer with 0.09% (w/v) sodium azide and 2% sucrose.
Concentration:	lot specific
Purification:	Affinity Purified
Conjugation:	Unconjugated
Storage:	Store at -20°C as received.
Stability:	Stable for 12 months from date of receipt.
Predicted Protein Size:	68 kDa
Gene Name:	protein phosphatase 1 regulatory subunit 18
Database Link:	<a href="#">NP_597728</a> <a href="#">Entrez Gene 170954 Human</a> <a href="#">Q6NYC8</a>
Background:	Protein phosphatase-1 interacts with regulatory subunits that target the enzyme to different cellular locations and change its activity toward specific substrates. Phostensin is a regulatory subunit that targets PP1 to F-actin cytoskeleton.
Synonyms:	HKMT1098; KIAA1949



[View online »](#)

**Note:** Immunogen Sequence Homology: Human: 100%; Pig: 93%; Horse: 86%; Bovine: 79%; Rabbit: 79%

**Product images:**



Host: Rabbit; Target Name: PPP1R18; Sample Tissue: HepG2 Whole Cell lysates; Antibody Dilution: 1.0 ug/ml