

Product datasheet for **TA340276**

BMPER Rabbit Polyclonal Antibody

Product data:

Product Type:	Primary Antibodies
Applications:	IHC, WB
Recommended Dilution:	WB, IHC
Reactivity:	Human
Host:	Rabbit
Isotype:	IgG
Clonality:	Polyclonal
Immunogen:	The immunogen for anti-BMPER antibody: synthetic peptide directed towards the C terminal of human BMPER. Synthetic peptide located within the following region: NGHKRDDLLIGGDGNFKFDVDDFAESWRVESNEFCNRPQRKPVPELCQGTV
Formulation:	Liquid. Purified antibody supplied in 1x PBS buffer with 0.09% (w/v) sodium azide and 2% sucrose. <i>Note that this product is shipped as lyophilized powder to China customers.</i>
Concentration:	lot specific
Purification:	Affinity Purified
Conjugation:	Unconjugated
Storage:	Store at -20°C as received.
Stability:	Stable for 12 months from date of receipt.
Predicted Protein Size:	76 kDa
Gene Name:	BMP binding endothelial regulator
Database Link:	NP_597725 Entrez Gene 168667 Human Q8N8U9
Background:	BMPER contains 1 TIL (trypsin inhibitory-like) domain, 5 VWFC domains and 1 VWFD domain. BMPER is the inhibitor of bone morphogenetic protein (BMP) functions. It may regulate BMP responsiveness of osteoblasts and chondrocytes.
Synonyms:	CRIM3; CV-2; CV2



[View online »](#)

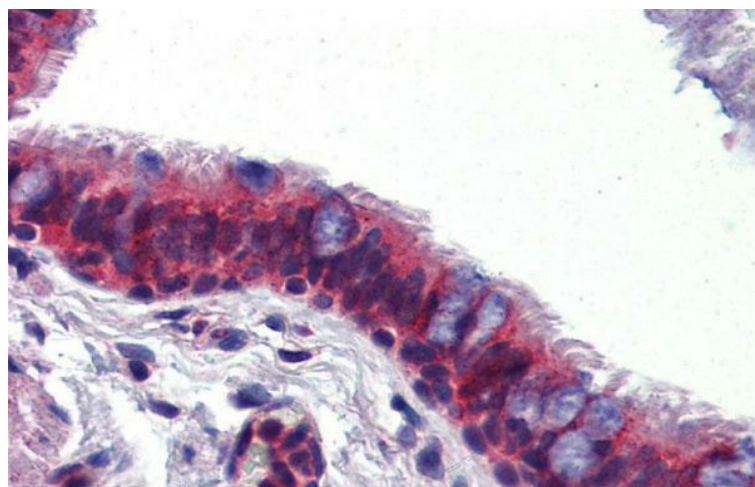
Note: Immunogen Sequence Homology: Dog: 100%; Pig: 100%; Rat: 100%; Horse: 100%; Human: 100%; Mouse: 100%; Rabbit: 100%; Bovine: 93%; Guinea pig: 93%; Yeast: 85%; Zebrafish: 79%

Protein Families: Secreted Protein

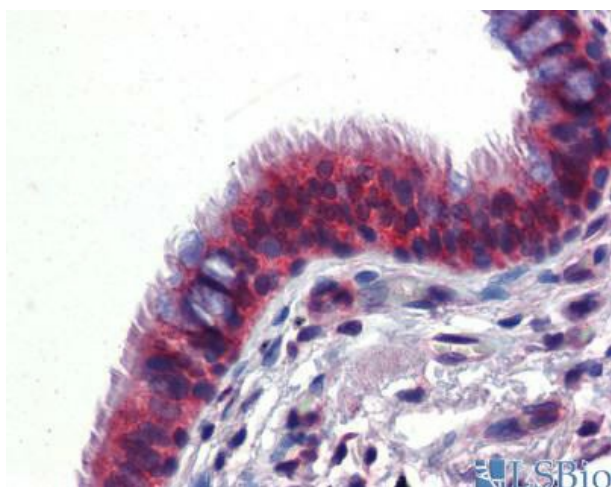
Product images:



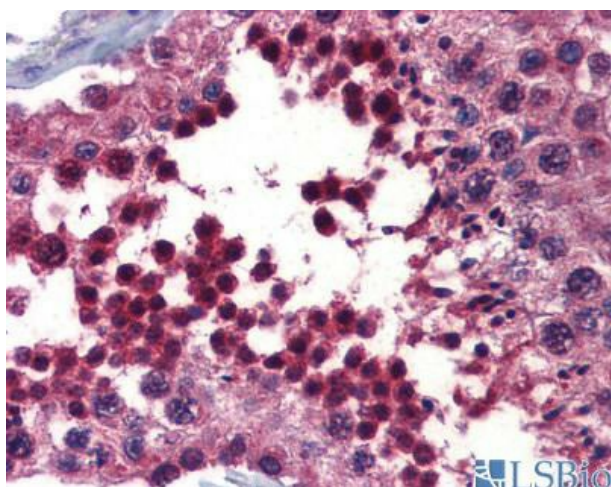
WB Suggested Anti-BMPER Antibody Titration: 1 ug/ml; Positive Control: Fetal heart lysate



Immunohistochemistry with Human Lung, respiratory epithelium tissue at an antibody concentration of 5.0 ug/ml using anti-BMPER antibody



Human Lung



Human Lung