

Product datasheet for **TA340274**

Ccbe1 Rabbit Polyclonal Antibody

Product data:

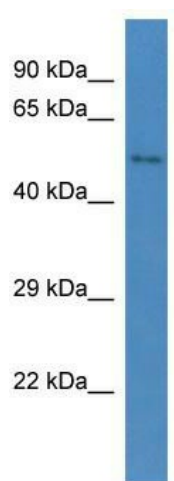
Product Type:	Primary Antibodies
Applications:	WB
Recommended Dilution:	WB
Reactivity:	Mouse
Host:	Rabbit
Isotype:	IgG
Clonality:	Polyclonal
Immunogen:	The immunogen for anti-Ccbe1 antibody: synthetic peptide corresponding to a region of Mouse. Synthetic peptide located within the following region: RGAPGPPGSPGPPGSFDFLLLVLADIRNDIAELQEKVFGHRTTHSSAEDFP
Formulation:	Liquid. Purified antibody supplied in 1x PBS buffer with 0.09% (w/v) sodium azide and 2% sucrose. <i>Note that this product is shipped as lyophilized powder to China customers.</i>
Concentration:	lot specific
Purification:	Affinity Purified
Conjugation:	Unconjugated
Storage:	Store at -20°C as received.
Stability:	Stable for 12 months from date of receipt.
Predicted Protein Size:	45 kDa
Gene Name:	collagen and calcium binding EGF domains 1
Database Link:	NP_848908 Entrez Gene 320924 Mouse Q3MI99
Background:	Ccbe1 is required for lymphangioblast budding and angiogenic sprouting from venous endothelium during embryogenesis.
Synonyms:	FLJ30681; KIAA1983; MGC50861



[View online »](#)

Note: Immunogen Sequence Homology: Dog: 100%; Pig: 100%; Horse: 100%; Human: 100%; Mouse: 100%; Rabbit: 100%; Guinea pig: 100%; Rat: 93%; Bovine: 86%

Product images:



WB Suggested Anti-Ccbe1 Antibody; Titration: 1.0 ug/ml; Positive Control: Mouse Kidney