

## Product datasheet for **TA340273**

### CCBE1 Rabbit Polyclonal Antibody

#### Product data:

Product Type:	Primary Antibodies
Applications:	WB
Recommended Dilution:	WB
Reactivity:	Human
Host:	Rabbit
Isotype:	IgG
Clonality:	Polyclonal
Immunogen:	The immunogen for anti-CCBE1 antibody: synthetic peptide directed towards the middle region of human CCBE1. Synthetic peptide located within the following region: PMGSPDLSHIKQRRGPVGGAPGRDGSKGERGAPGRGSPGPPGSFD
Formulation:	Liquid. Purified antibody supplied in 1x PBS buffer with 0.09% (w/v) sodium azide and 2% sucrose. <i>Note that this product is shipped as lyophilized powder to China customers.</i>
Concentration:	lot specific
Purification:	Affinity Purified
Conjugation:	Unconjugated
Storage:	Store at -20°C as received.
Stability:	Stable for 12 months from date of receipt.
Predicted Protein Size:	44 kDa
Gene Name:	collagen and calcium binding EGF domains 1
Database Link:	<a href="#">NP_597716</a> <a href="#">Entrez Gene 147372 Human</a> <a href="#">Q6UXH8</a>
Background:	This gene is thought to function in extracellular matrix remodeling and migration. It is predominantly expressed in the ovary, but down regulated in ovarian cancer cell lines and primary carcinomas, suggesting its role as a tumour suppressor. Mutations in this gene have been associated with Hennekam lymphangiectasia-lymphedema syndrome, a generalized lymphatic dysplasia in humans.

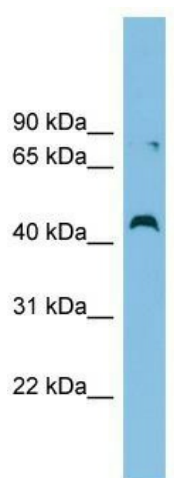


[View online »](#)

Synonyms: HKLLS1

Note: Immunogen Sequence Homology: Dog: 100%; Pig: 100%; Rat: 100%; Human: 100%; Mouse: 100%; Bovine: 100%; Rabbit: 100%; Zebrafish: 100%; Guinea pig: 100%

### Product images:



WB Suggested Anti-CCBE1 Antibody Titration: 0.2-1 ug/ml; ELISA Titer: 1: 12500; Positive Control: ACHN cell lysate