

Product datasheet for **TA340272**

EMID2 (COL26A1) Rabbit Polyclonal Antibody

Product data:

Product Type:	Primary Antibodies
Applications:	WB
Recommended Dilution:	WB
Reactivity:	Human
Host:	Rabbit
Isotype:	IgG
Clonality:	Polyclonal
Immunogen:	The immunogen for anti-COL26A1 antibody: synthetic peptide directed towards the C terminal of human COL26A1. Synthetic peptide located within the following region: GVVQLREALKILAERVLILEHMIGIHDPLASPEGGSGQDAALRANLKMKR
Formulation:	Liquid. Purified antibody supplied in 1x PBS buffer with 0.09% (w/v) sodium azide and 2% sucrose. <i>Note that this product is shipped as lyophilized powder to China customers.</i>
Concentration:	lot specific
Purification:	Affinity Purified
Conjugation:	Unconjugated
Storage:	Store at -20°C as received.
Stability:	Stable for 12 months from date of receipt.
Predicted Protein Size:	45 kDa
Gene Name:	collagen type XXVI alpha 1
Database Link:	NP_597714 Entrez Gene 136227 Human Q96A83
Background:	COL26A1 contains 1 EMI domain and 2 collagen-like domains. The exact function of ZCCHC3 remains unknown.
Synonyms:	EMI6; EMID2; EMU2; SH2B

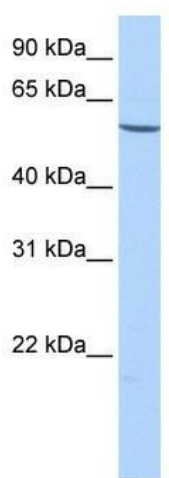


[View online »](#)

Note: Immunogen Sequence Homology: Dog: 100%; Rat: 100%; Horse: 100%; Human: 100%; Mouse: 100%; Rabbit: 100%; Pig: 93%; Bovine: 86%

Protein Families: Secreted Protein, Transmembrane

Product images:



WB Suggested Anti-COL26A1 Antibody Titration:
0.2-1 ug/ml; Positive Control: HepG2 cell lysate