

## Product datasheet for **TA340271**

### EMID2 (COL26A1) Rabbit Polyclonal Antibody

#### Product data:

|                         |   |
|-------------------------|---|
| Product Type:           | Primary Antibodies  |
| Applications:           | WB  |
| Recommended Dilution:   | WB  |
| Reactivity:             | Human   |
| Host:                   | Rabbit  |
| Isotype:                | IgG   |
| Clonality:              | Polyclonal  |
| Immunogen:              | The immunogen for anti-COL26A1 antibody: synthetic peptide directed towards the C terminal of human COL26A1. Synthetic peptide located within the following region: LAGERGTVGSPGEPGVKGEERGEKAATAEGEGVQQLREALKILAERVLILE |
| Formulation:            | Liquid. Purified antibody supplied in 1x PBS buffer with 0.09% (w/v) sodium azide and 2% sucrose.<br><i>Note that this product is shipped as lyophilized powder to China customers.</i>                                 |
| Concentration:          | lot specific  |
| Purification:           | Affinity Purified   |
| Conjugation:            | Unconjugated  |
| Storage:                | Store at -20°C as received.   |
| Stability:              | Stable for 12 months from date of receipt.  |
| Predicted Protein Size: | 45 kDa  |
| Gene Name:              | collagen type XXVI alpha 1  |
| Database Link:          | <a href="#">NP_597714</a><br><a href="#">Entrez Gene 136227 Human Q96A83</a>  |
| Background:             | COL26A1 contains 1 EMI domain and 2 collagen-like domains. The exact function of ZCCHC3 remains unknown.  |
| Synonyms:               | EMI6; EMID2; EMU2; SH2B   |

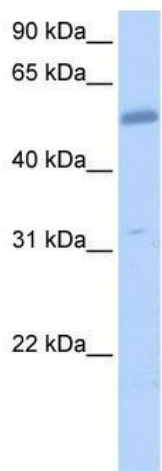


[View online »](#)

**Note:** Immunogen Sequence Homology: Dog: 100%; Pig: 100%; Rat: 100%; Horse: 100%; Human: 100%; Mouse: 100%; Bovine: 100%; Rabbit: 100%; Zebrafish: 83%; Guinea pig: 83%

**Protein Families:** Secreted Protein, Transmembrane

**Product images:**



WB Suggested Anti-COL26A1 Antibody Titration:  
0.2-1 ug/ml; Positive Control: 721\_B cell lysate