

## Product datasheet for **TA340269**

### DEDD2 Rabbit Polyclonal Antibody

#### Product data:

Product Type:	Primary Antibodies
Applications:	WB
Recommended Dilution:	WB
Reactivity:	Human
Host:	Rabbit
Isotype:	IgG
Clonality:	Polyclonal
Immunogen:	The immunogen for anti-DEDD2 antibody: synthetic peptide directed towards the middle region of human DEDD2. Synthetic peptide located within the following region: PQQQSEPARPSSEGKVTCDIRLRVRAEYCEHGPALQGVASRRPQALARQ
Formulation:	Liquid. Purified antibody supplied in 1x PBS buffer with 0.09% (w/v) sodium azide and 2% sucrose. <i>Note that this product is shipped as lyophilized powder to China customers.</i>
Concentration:	lot specific
Purification:	Affinity Purified
Conjugation:	Unconjugated
Storage:	Store at -20°C as received.
Stability:	Stable for 12 months from date of receipt.
Predicted Protein Size:	36
Gene Name:	death effector domain containing 2
Database Link:	<a href="#">NP_579874</a> <a href="#">Entrez Gene 162989 Human</a> <a href="#">Q8WXF8</a>
Background:	DEDD2 may play a critical role in death receptor-induced apoptosis and may target CASP8 and CASP10 to the nucleus. DEDD2 may regulate degradation of intermediate filaments during apoptosis. DEDD2 may play a role in the general transcription machinery in the nucleus and might be an important regulator of the activity of GTF3C3.
Synonyms:	FLAME-3; FLAME3

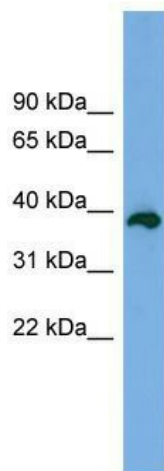


[View online »](#)

**Note:** Immunogen Sequence Homology: Dog: 100%; Pig: 100%; Rat: 100%; Horse: 100%; Human: 100%; Mouse: 100%; Bovine: 100%; Rabbit: 100%; Guinea pig: 100%

**Protein Families:** Druggable Genome, Transcription Factors

**Product images:**



WB Suggested Anti-DEDD2 Antibody Titration:  
0.2-1 ug/ml; ELISA Titer: 1: 1562500; Positive  
Control: Human Lung