

## Product datasheet for **TA340267**

### WIPF2 Rabbit Polyclonal Antibody

#### Product data:

Product Type:	Primary Antibodies
Applications:	WB
Recommended Dilution:	WB
Reactivity:	Human
Host:	Rabbit
Isotype:	IgG
Clonality:	Polyclonal
Immunogen:	The immunogen for anti-WIPF2 antibody: synthetic peptide directed towards the middle region of human WIPF2. Synthetic peptide located within the following region: AAPPPPPVIRNGARDAPPPPPYRMHGSEPPSRGKPPPPSRTPAGPPP
Formulation:	Liquid. Purified antibody supplied in 1x PBS buffer with 0.09% (w/v) sodium azide and 2% sucrose. <i>Note that this product is shipped as lyophilized powder to China customers.</i>
Concentration:	lot specific
Purification:	Affinity Purified
Conjugation:	Unconjugated
Storage:	Store at -20°C as received.
Stability:	Stable for 12 months from date of receipt.
Predicted Protein Size:	46
Gene Name:	WAS/WASL interacting protein family member 2
Database Link:	<a href="#">NP_573571</a> <a href="#">Entrez Gene 147179 Human</a> <a href="#">Q8TF74</a>
Background:	This gene encodes a WASP interacting protein (WIP)-related protein. It has been shown that this protein has a role in the WASP-mediated organization of the actin cytoskeleton and that this protein is a potential link between the activated platelet-derived growth factor receptor and the actin polymerization machinery.
Synonyms:	WICH; WIRE

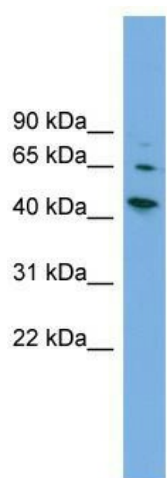


[View online »](#)

**Note:** Immunogen Sequence Homology: Dog: 100%; Pig: 100%; Rat: 100%; Horse: 100%; Human: 100%; Mouse: 100%; Yeast: 100%; Bovine: 100%; Rabbit: 100%; Guinea pig: 100%; Zebrafish: 87%

**Protein Families:** Druggable Genome

### Product images:



WB Suggested Anti-WIPF2 Antibody Titration: 0.2-1 ug/ml; ELISA Titer: 1: 1562500; Positive Control: HepG2 cell lysate. WIPF2 is strongly supported by BioGPS gene expression data to be expressed in Human HepG2 cells