

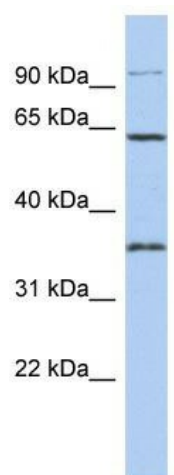
Product datasheet for **TA340264**

FAM71B Rabbit Polyclonal Antibody

Product data:

Product Type:	Primary Antibodies
Applications:	WB
Recommended Dilution:	WB
Reactivity:	Human
Host:	Rabbit
Isotype:	IgG
Clonality:	Polyclonal
Immunogen:	The immunogen for anti-FAM71B antibody: synthetic peptide directed towards the middle region of human FAM71B. Synthetic peptide located within the following region: RREKKDRHPSRKSSSHHRKAGESHRRRRAGDKNQKASSHRASGHKNTRDDK
Formulation:	Liquid. Purified antibody supplied in 1x PBS buffer with 0.09% (w/v) sodium azide and 2% sucrose.
Concentration:	lot specific
Purification:	Affinity Purified
Conjugation:	Unconjugated
Storage:	Store at -20°C as received.
Stability:	Stable for 12 months from date of receipt.
Predicted Protein Size:	65 kDa
Gene Name:	family with sequence similarity 71 member B
Database Link:	NP_570969 Entrez Gene 153745 Human Q8TC56
Background:	FAM71B may be involved in RNA biogenesis.
Synonyms:	MGC26988
Note:	Immunogen Sequence Homology: Human: 100%; Pig: 77%


[View online »](#)

Product images:

WB Suggested Anti-FAM71B Antibody Titration:
0.2-1 $\mu\text{g/ml}$; ELISA Titer: 1: 312500; Positive
Control: SH-SY5Y cell lysate