

## Product datasheet for **TA340263**

### **DNAAF4 Rabbit Polyclonal Antibody**

#### **Product data:**

<b>Product Type:</b>	Primary Antibodies
<b>Applications:</b>	WB
<b>Recommended Dilution:</b>	WB
<b>Reactivity:</b>	Human
<b>Host:</b>	Rabbit
<b>Isotype:</b>	IgG
<b>Clonality:</b>	Polyclonal
<b>Immunogen:</b>	The immunogen for anti-DYX1C1 antibody: synthetic peptide directed towards the middle region of human DYX1C1. Synthetic peptide located within the following region: TDNANARMKAHVRRGTAFQCLELYVEGLQDYEAALKIDPSNKIVQIDAEK
<b>Formulation:</b>	Liquid. Purified antibody supplied in 1x PBS buffer with 0.09% (w/v) sodium azide and 2% sucrose. <i>Note that this product is shipped as lyophilized powder to China customers.</i>
<b>Concentration:</b>	lot specific
<b>Purification:</b>	Affinity Purified
<b>Conjugation:</b>	Unconjugated
<b>Storage:</b>	Store at -20°C as received.
<b>Stability:</b>	Stable for 12 months from date of receipt.
<b>Predicted Protein Size:</b>	48 kDa
<b>Gene Name:</b>	dyslexia susceptibility 1 candidate 1
<b>Database Link:</b>	<a href="#">NP_570722</a> <a href="#">Entrez Gene 161582 Human</a> <a href="#">Q8WXU2</a>
<b>Background:</b>	This gene encodes a tetratricopeptide repeat domain-containing protein. The encoded protein interacts with estrogen receptors and the heat shock proteins, Hsp70 and Hsp90. A chromosomal translocation involving this gene is associated with a susceptibility to developmental dyslexia. Mutations in this gene are associated with deficits in reading and spelling. Alternate splicing results in multiple transcript variants.

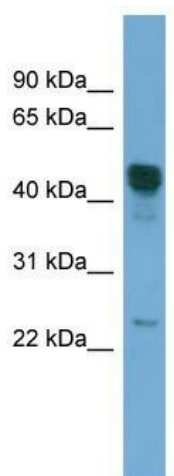


[View online »](#)

**Synonyms:** CILD25; DNAAF4; DYX1; DYXC1; EKN1; RD

**Note:** Immunogen Sequence Homology: Pig: 100%; Rat: 100%; Human: 100%; Mouse: 100%; Bovine: 100%; Rabbit: 100%; Guinea pig: 100%; Dog: 93%; Horse: 93%; Yeast: 90%; Zebrafish: 85%

**Product images:**



WB Suggested Anti-DYX1C1 Antibody Titration:  
0.2-1 ug/ml; ELISA Titer: 1: 1562500; Positive  
Control: 721\_B cell lysate