

## Product datasheet for **TA340262**

### **DNAAF4 Rabbit Polyclonal Antibody**

#### **Product data:**

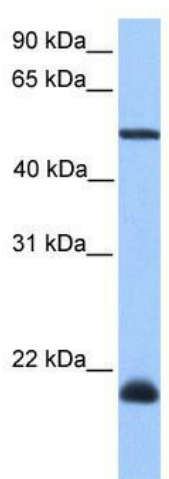
<b>Product Type:</b>	Primary Antibodies
<b>Applications:</b>	WB
<b>Recommended Dilution:</b>	WB
<b>Reactivity:</b>	Human
<b>Host:</b>	Rabbit
<b>Isotype:</b>	IgG
<b>Clonality:</b>	Polyclonal
<b>Immunogen:</b>	The immunogen for anti-DYX1C1 antibody: synthetic peptide directed towards the C terminal of human DYX1C1. Synthetic peptide located within the following region: FATENYLAAINAYNLAIRLNNKMPLLYLNRAACHLKLKLNHKAIEDSSKA
<b>Formulation:</b>	Liquid. Purified antibody supplied in 1x PBS buffer with 0.09% (w/v) sodium azide and 2% sucrose. <i>Note that this product is shipped as lyophilized powder to China customers.</i>
<b>Concentration:</b>	lot specific
<b>Purification:</b>	Affinity Purified
<b>Conjugation:</b>	Unconjugated
<b>Storage:</b>	Store at -20°C as received.
<b>Stability:</b>	Stable for 12 months from date of receipt.
<b>Predicted Protein Size:</b>	48 kDa
<b>Gene Name:</b>	dyslexia susceptibility 1 candidate 1
<b>Database Link:</b>	<a href="#">NP_570722</a> <a href="#">Entrez Gene 161582 Human</a> <a href="#">Q8WXU2</a>
<b>Background:</b>	DYX1C1 contains 1 CS domain and 3 TPR repeats. A chromosomal aberration, translocation t(2;15)(q11;q21), involving DYX1C1 may be a cause of dyslexia.
<b>Synonyms:</b>	CILD25; DNAAF4; DYX1; DYXC1; EKN1; RD



[View online »](#)

**Note:** Immunogen Sequence Homology: Dog: 100%; Pig: 100%; Rat: 100%; Horse: 100%; Human: 100%; Mouse: 100%; Bovine: 100%; Rabbit: 100%; Guinea pig: 100%; Zebrafish: 92%

**Product images:**



WB Suggested Anti-DYX1C1 Antibody Titration:  
0.2-1 ug/ml; Positive Control: HeLa cell lysate