

Product datasheet for **TA340261**

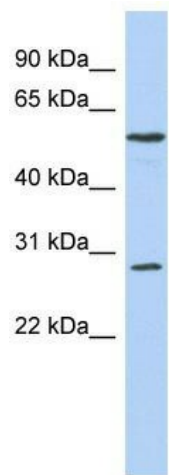
PRRC1 Rabbit Polyclonal Antibody

Product data:

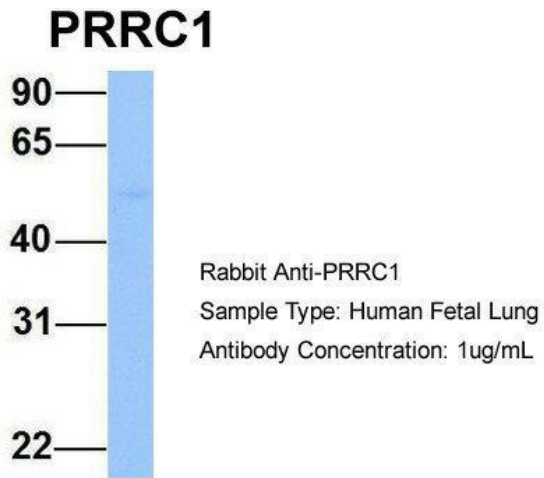
Product Type:	Primary Antibodies
Applications:	WB
Recommended Dilution:	WB
Reactivity:	Human
Host:	Rabbit
Isotype:	IgG
Clonality:	Polyclonal
Immunogen:	The immunogen for anti-PRRC1 antibody: synthetic peptide directed towards the middle region of human PRR1. Synthetic peptide located within the following region: VGEAGQSNIAQPVGYYAAGLKGAKERIDSLRRTGVIHEKQTAVSVENFIA
Formulation:	Liquid. Purified antibody supplied in 1x PBS buffer with 0.09% (w/v) sodium azide and 2% sucrose.
Concentration:	lot specific
Purification:	Affinity Purified
Conjugation:	Unconjugated
Storage:	Store at -20°C as received.
Stability:	Stable for 12 months from date of receipt.
Predicted Protein Size:	47 kDa
Gene Name:	proline rich coiled-coil 1
Database Link:	NP_570721 Entrez Gene 133619 Human Q96M27
Background:	The specific function of PRR1 is not yet known.
Synonyms:	FLJ32875
Note:	Immunogen Sequence Homology: Dog: 100%; Pig: 100%; Rat: 100%; Horse: 100%; Human: 100%; Mouse: 100%; Bovine: 100%; Rabbit: 100%; Guinea pig: 100%; Zebrafish: 93%


[View online »](#)

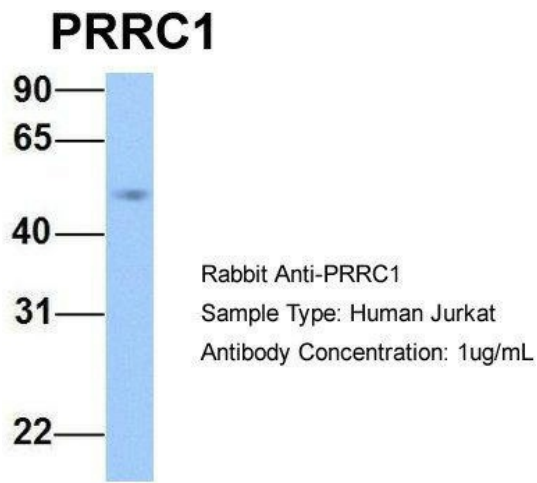
Product images:



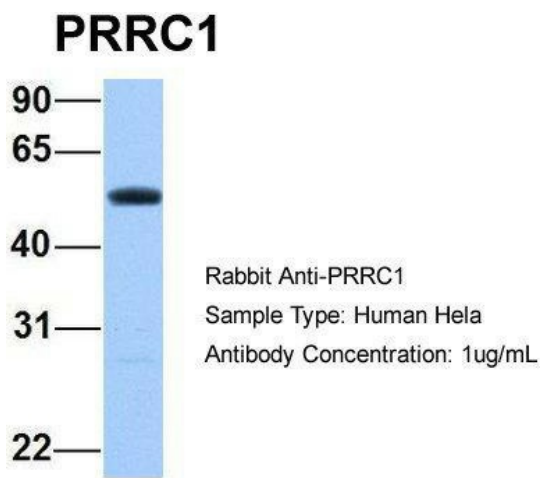
WB Suggested Anti-PRRC1 Antibody Titration: 0.2-1 ug/ml; ELISA Titer: 1: 312500; Positive Control: OVCAR-3 cell lysate



Host: Rabbit; Target Name: PRRC1; Sample Tissue: Human Fetal Lung; Antibody Dilution: 1.0 ug/ml



Host: Rabbit; Target Name: PRRC1; Sample Tissue: Human Jurkat; Antibody Dilution: 1.0 ug/ml; PRRC1 is supported by BioGPS gene expression data to be expressed in Jurkat



Host: Rabbit; Target Name: PRRC1; Sample Tissue: Human HeLa; Antibody Dilution: 1.0 ug/ml; PRRC1 is supported by BioGPS gene expression data to be expressed in HeLa