

Product datasheet for **TA340254**

RAB40A Rabbit Polyclonal Antibody

Product data:

Product Type:	Primary Antibodies
Applications:	WB
Recommended Dilution:	WB
Reactivity:	Human
Host:	Rabbit
Isotype:	IgG
Clonality:	Polyclonal
Immunogen:	The immunogen for anti-RAB40A antibody: synthetic peptide directed towards the middle region of human RAB40A. Synthetic peptide located within the following region: RPSKVLSLQDLCCRTIVSCTPVHLVDKLPSTLRSHLKSFSMAKGLNAR
Formulation:	Liquid. Purified antibody supplied in 1x PBS buffer with 0.09% (w/v) sodium azide and 2% sucrose. <i>Note that this product is shipped as lyophilized powder to China customers.</i>
Concentration:	lot specific
Purification:	Affinity Purified
Conjugation:	Unconjugated
Storage:	Store at -20°C as received.
Stability:	Stable for 12 months from date of receipt.
Predicted Protein Size:	31 kDa
Gene Name:	RAB40A, member RAS oncogene family
Database Link:	NP_543155 Entrez Gene 142684 Human Q8WXH6
Background:	RAB40A belongs to the small GTPase superfamily, Rab family. It contains 1 SOCS box domain. RAB40A may be a substrate-recognition component of a SCF-like ECS (Elongin-Cullin-SOCS-box protein) E3 ubiquitin ligase complex which mediates the ubiquitination and subsequent proteasomal degradation of target proteins.
Synonyms:	RAR2; RAR2A

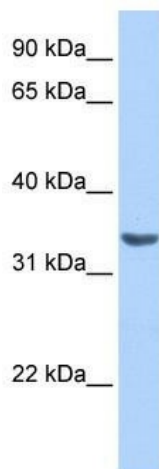


[View online »](#)

Note: Immunogen Sequence Homology: Human: 100%; Pig: 86%; Rat: 86%; Horse: 86%; Mouse: 86%; Rabbit: 86%; Guinea pig: 86%; Bovine: 85%; Dog: 79%; Goat: 79%; Zebrafish: 79%

Protein Families: Druggable Genome

Product images:



WB Suggested Anti-RAB40A Antibody Titration:
0.2-1 ug/ml; Positive Control: HepG2 cell lysate