

## Product datasheet for **TA340253**

### DUSP19 Rabbit Polyclonal Antibody

#### Product data:

Product Type:	Primary Antibodies
Applications:	WB
Recommended Dilution:	WB
Reactivity:	Human
Host:	Rabbit
Isotype:	IgG
Clonality:	Polyclonal
Immunogen:	The immunogen for anti-DUSP19 antibody: synthetic peptide directed towards the C terminal of human DUSP19. Synthetic peptide located within the following region: SEQTSFTSAFSLVKNARPSICPNSGFMEQLRITYQEGKESNKCDRIQENSS
Formulation:	Liquid. Purified antibody supplied in 1x PBS buffer with 0.09% (w/v) sodium azide and 2% sucrose. <i>Note that this product is shipped as lyophilized powder to China customers.</i>
Concentration:	lot specific
Purification:	Affinity Purified
Conjugation:	Unconjugated
Storage:	Store at -20°C as received.
Stability:	Stable for 12 months from date of receipt.
Predicted Protein Size:	24 kDa
Gene Name:	dual specificity phosphatase 19
Database Link:	<a href="#">NP_543152</a> <a href="#">Entrez Gene 142679 Human</a> <a href="#">Q8WTR2</a>
Background:	DUSP19 belongs to the protein-tyrosine phosphatase family, non-receptor class dual specificity subfamily. It contains 1 tyrosine-protein phosphatase domain. DUSP19 has a dual specificity toward Ser/Thr and Tyr-containing proteins.
Synonyms:	DUSP17; LMWDSP3; SKRP1; TS-DSP1

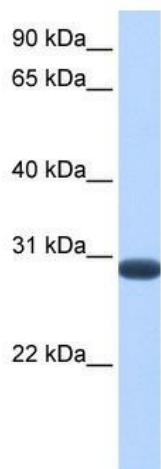


[View online »](#)

**Note:** Immunogen Sequence Homology: Human: 100%; Pig: 93%; Horse: 93%; Bovine: 93%; Guinea pig: 93%; Rat: 92%; Mouse: 92%; Dog: 86%; Rabbit: 79%

**Protein Families:** Druggable Genome, Phosphatase

**Product images:**



WB Suggested Anti-DUSP19 Antibody Titration:  
0.2-1 ug/ml; Positive Control: Human Muscle