

Product datasheet for **TA340252**

ASB17 Rabbit Polyclonal Antibody

Product data:

Product Type:	Primary Antibodies
Applications:	WB
Recommended Dilution:	WB
Reactivity:	Human
Host:	Rabbit
Isotype:	IgG
Clonality:	Polyclonal
Immunogen:	The immunogen for anti-ASB17 antibody: synthetic peptide directed towards the middle region of human ASB17. Synthetic peptide located within the following region: SPLSGITPLFYVAQTRQSNIFKILLQYGILEREKNPINIVLTIVLYPSRV
Formulation:	Liquid. Purified antibody supplied in 1x PBS buffer with 0.09% (w/v) sodium azide and 2% sucrose. <i>Note that this product is shipped as lyophilized powder to China customers.</i>
Concentration:	lot specific
Purification:	Affinity Purified
Conjugation:	Unconjugated
Storage:	Store at -20°C as received.
Stability:	Stable for 12 months from date of receipt.
Predicted Protein Size:	34 kDa
Gene Name:	ankyrin repeat and SOCS box containing 17
Database Link:	NP_543144 Entrez Gene 127247 Human Q8WXJ9
Background:	ASB17 may be a substrate-recognition component of a SCF-like ECS (Elongin-Cullin-SOCS-box protein) E3 ubiquitin-protein ligase complex which mediates the ubiquitination and subsequent proteasomal degradation of target proteins.
Synonyms:	Asb-17

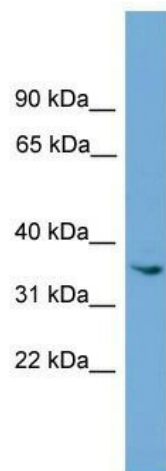


[View online »](#)

Note: Immunogen Sequence Homology: Dog: 100%; Rat: 100%; Horse: 100%; Human: 100%; Mouse: 100%; Rabbit: 100%; Bovine: 93%; Pig: 79%; Guinea pig: 79%

Protein Families: Druggable Genome

Product images:



WB Suggested Anti-ASB17 Antibody; Titration: 1.0 ug/ml; Positive Control: ACHN Whole Cell