

Product datasheet for **TA340251**

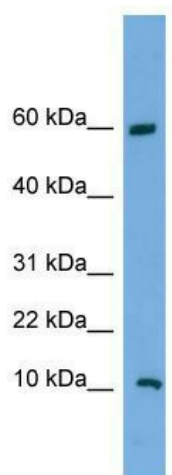
C20orf144 Rabbit Polyclonal Antibody

Product data:

Product Type:	Primary Antibodies
Applications:	WB
Recommended Dilution:	WB
Reactivity:	Human
Host:	Rabbit
Isotype:	IgG
Clonality:	Polyclonal
Immunogen:	The immunogen for anti-C20orf144 antibody: synthetic peptide directed towards the middle region of human C20orf144. Synthetic peptide located within the following region: EARRPEEGGARAALSWPRLLSRFRSPGKAPREAGPAEEQPRKRCRCRPRQ
Formulation:	Liquid. Purified antibody supplied in 1x PBS buffer with 0.09% (w/v) sodium azide and 2% sucrose. <i>Note that this product is shipped as lyophilized powder to China customers.</i>
Concentration:	lot specific
Purification:	Affinity Purified
Conjugation:	Unconjugated
Storage:	Store at -20°C as received.
Stability:	Stable for 12 months from date of receipt.
Predicted Protein Size:	17 kDa
Gene Name:	chromosome 20 open reading frame 144
Database Link:	NP_543015 Entrez Gene 128864 Human Q9BQM9
Background:	The function of this protein remains unknown.
Synonyms:	dj63M2.6
Note:	Immunogen Sequence Homology: Human: 100%



[View online »](#)

Product images:

WB Suggested Anti-C20orf144 Antibody Titration:
0.2-1 ug/ml; Positive Control: NCI-H226 cell lysate