

Product datasheet for **TA340250**

NEURL2 Rabbit Polyclonal Antibody

Product data:

Product Type:	Primary Antibodies
Applications:	WB
Recommended Dilution:	WB
Reactivity:	Human
Host:	Rabbit
Isotype:	IgG
Clonality:	Polyclonal
Immunogen:	The immunogen for anti-NEURL2 antibody: synthetic peptide directed towards the middle region of human NEURL2. Synthetic peptide located within the following region: VEPYLRIEQFRIPRDLVGRSRPGLYSHLLDQLYELNVLPTARRSRLGV
Formulation:	Liquid. Purified antibody supplied in 1x PBS buffer with 0.09% (w/v) sodium azide and 2% sucrose.
Concentration:	lot specific
Purification:	Affinity Purified
Conjugation:	Unconjugated
Storage:	Store at -20°C as received.
Stability:	Stable for 12 months from date of receipt.
Predicted Protein Size:	32 kDa
Gene Name:	neuralized E3 ubiquitin protein ligase 2
Database Link:	NP_542787 Entrez Gene 140825 Human Q9BR09
Background:	NEURL2 contains 1 NHR (neuralized homology repeat) domain and 1 SOCS box domain. NEURL2 plays an important role in the process of myofiber differentiation and maturation. NEURL2 is the probable substrate-recognition component of a SCF-like ECS (Elongin BC
Synonyms:	C20orf163; OZZ; OZZ-E3

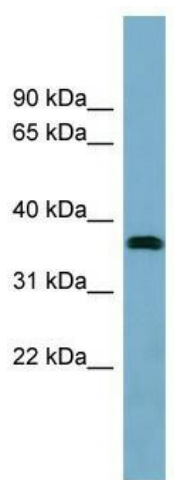


[View online »](#)

Note: Immunogen Sequence Homology: Dog: 100%; Pig: 100%; Rat: 100%; Horse: 100%; Human: 100%; Mouse: 100%; Bovine: 100%; Rabbit: 100%; Guinea pig: 100%

Protein Families: Druggable Genome

Product images:



WB Suggested Anti-NEURL2 Antibody Titration:
0.2-1 ug/ml; Positive Control: Human Placenta