

Product datasheet for **TA340249**

NEURL2 Rabbit Polyclonal Antibody

Product data:

| | |
|-------------------------|-------------------------------------------------------------------------------------------------------------------------------------------------------------------------------------------------------------------------|
| Product Type: | Primary Antibodies |
| Applications: | WB |
| Recommended Dilution: | WB |
| Reactivity: | Human |
| Host: | Rabbit |
| Isotype: | IgG |
| Clonality: | Polyclonal |
| Immunogen: | The immunogen for anti-NEURL2 antibody: synthetic peptide directed towards the N terminal of human NEURL2. Synthetic peptide located within the following region: MAAASEPVDSGALWGLERPEPPPTRFHRVHGANIRVDPSGTRATRVESFA |
| Formulation: | Liquid. Purified antibody supplied in 1x PBS buffer with 0.09% (w/v) sodium azide and 2% sucrose. |
| Concentration: | lot specific |
| Purification: | Affinity Purified |
| Conjugation: | Unconjugated |
| Storage: | Store at -20°C as received. |
| Stability: | Stable for 12 months from date of receipt. |
| Predicted Protein Size: | 32 kDa |
| Gene Name: | neuralized E3 ubiquitin protein ligase 2 |
| Database Link: | NP_542787 Entrez Gene 140825 Human Q9BR09 |



[View online »](#)

Background:

NEURL2 contains 1 NHR (neuralized homology repeat) domain and 1 SOCS box domain. NEURL2 plays an important role in the process of myofiber differentiation and maturation. NEURL2 is the probable substrate-recognition component of a SCF-like ECS (Elongin BC-CUL2/5-SOCS-box protein) E3 ubiquitin-protein ligase complex, which mediates the ubiquitination of proteins. NEURL2 probably contributes to catalysis through recognition and positioning of the substrate and the ubiquitin-conjugating enzyme. During myogenesis, it controls the ubiquitination and degradation of the specific pool of CTNNB1/beta-catenin located at the sarcolemma.

Synonyms:

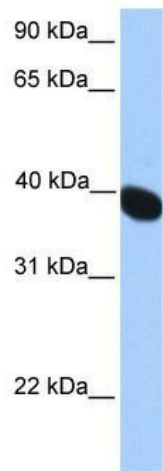
C20orf163; OZZ; OZZ-E3

Note:

Immunogen Sequence Homology: Pig: 100%; Rat: 100%; Human: 100%; Guinea pig: 100%; Dog: 93%; Mouse: 93%; Bovine: 93%; Rabbit: 93%; Horse: 86%

Protein Families:

Druggable Genome

Product images:

WB Suggested Anti-NEURL2 Antibody Titration:
0.2-1 ug/ml; Positive Control: Human Muscle