

Product datasheet for **TA340248**

NEU4 Rabbit Polyclonal Antibody

Product data:

Product Type:	Primary Antibodies
Applications:	WB
Recommended Dilution:	WB
Reactivity:	Human
Host:	Rabbit
Isotype:	IgG
Clonality:	Polyclonal
Immunogen:	The immunogen for anti-NEU4 antibody: synthetic peptide directed towards the N terminal of human NEU4. Synthetic peptide located within the following region: TGTVFLFFIAVLGHTPEAVQIATGRNAARLCCVASRDAGLSWGSARDLTE
Formulation:	Liquid. Purified antibody supplied in 1x PBS buffer with 0.09% (w/v) sodium azide and 2% sucrose. <i>Note that this product is shipped as lyophilized powder to China customers.</i>
Concentration:	lot specific
Purification:	Affinity Purified
Conjugation:	Unconjugated
Storage:	Store at -20°C as received.
Stability:	Stable for 12 months from date of receipt.
Predicted Protein Size:	53 kDa
Gene Name:	neuraminidase 4 (sialidase)
Database Link:	NP_542779 Entrez Gene 129807 Human Q8WWR8
Background:	NEU4 belongs to a family of glycohydrolytic enzymes which remove sialic acid residues from glycoproteins and glycolipids. This gene belongs to a family of glycohydrolytic enzymes which remove sialic acid residues from glycoproteins and glycolipids.
Synonyms:	FLJ35928; MGC18222; MGC102757

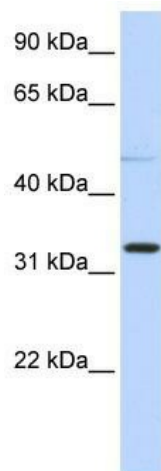


[View online »](#)

Note: Immunogen Sequence Homology: Rat: 100%; Human: 100%; Mouse: 100%; Pig: 93%; Guinea pig: 93%

Protein Pathways: Other glycan degradation, Sphingolipid metabolism

Product images:



WB Suggested Anti-NEU4 Antibody Titration: 0.2-1 ug/ml; ELISA Titer: 1: 312500; Positive Control: 293T cell lysate