

Product datasheet for **TA340246**

C20orf141 Rabbit Polyclonal Antibody

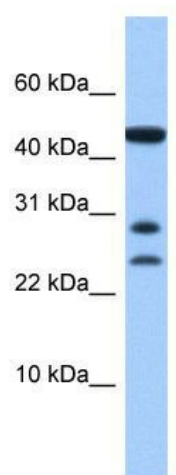
Product data:

Product Type:	Primary Antibodies
Applications:	WB
Recommended Dilution:	WB
Reactivity:	Human
Host:	Rabbit
Isotype:	IgG
Clonality:	Polyclonal
Immunogen:	The immunogen for anti-C20orf141 antibody: synthetic peptide directed towards the middle region of human C20orf141. Synthetic peptide located within the following region: HTLPQRKLLTRGQSQGAGEGPGQQEALLQMGTVSGQLSLQDALLLLMG
Formulation:	Liquid. Purified antibody supplied in 1x PBS buffer with 0.09% (w/v) sodium azide and 2% sucrose.
Concentration:	lot specific
Purification:	Affinity Purified
Conjugation:	Unconjugated
Storage:	Store at -20°C as received.
Stability:	Stable for 12 months from date of receipt.
Predicted Protein Size:	17 kDa
Gene Name:	chromosome 20 open reading frame 141
Database Link:	NP_542777 Entrez Gene 128653 Human Q9NUB4
Background:	The exact function of C20orf141 remains unknown.
Synonyms:	dj860F19.4
Note:	Immunogen Sequence Homology: Rat: 100%; Human: 100%; Mouse: 100%; Bovine: 93%; Dog: 92%



[View online »](#)

Product images:



WB Suggested Anti-C20orf141 Antibody Titration:
0.2-1 ug/ml; Positive Control: Hela cell lysate